



Automne  
*Hiver*  
2026

# Catalogue spécial Noël 2026



|       |   |           |      |           |     |            |      |    |
|-------|---|-----------|------|-----------|-----|------------|------|----|
| 02528 | CORNET TRANSPARENT SAINT NICOLAS 18X37CM        | 0,14 CHF  | 1000 | 0,17 CHF  | 250 | PVC        | Noel | 20 |
| 02529 | CORNET TRANSPARENT SAINT NICOLAS 25X46CM        | 0,20 CHF  | 1000 | 0,24 CHF  | 250 | PVC        | Noel | 20 |
| 22745 | VERRE A EAU SAINT-NICOLAS D9H12CM               | 4,90 CHF  | 12   | 5,85 CHF  | 6   | VERRE      | Noel | 20 |
| 31614 | MITRE ST-NICOLAS KRAFT N°2 D14/20H25CM          | 4,45 CHF  | 60   | 5,29 CHF  | 20  | CARTON     | Noel | 20 |
| 31744 | BOITE MAISON ROUGE SAINT NICOLAS 13X8H21CM      | 1,93 CHF  | 48   | 2,30 CHF  | 24  | CARTON     | Noel | 20 |
| 32048 | GOBELET SAINT-NICOLAS N°1 D7/10H9,5/18CM        | 1,96 CHF  | 40   | 2,35 CHF  | 20  | CARTON     | Noel | 20 |
| 32049 | GOBELET SAINT-NICOLAS N°2 D9/12H10/22CM         | 2,77 CHF  | 40   | 3,33 CHF  | 20  | CARTON     | Noel | 20 |
| 33547 | PANIER MITRE 10X7,5H15CM +ANSE                  | 5,57 CHF  | 12   | 6,69 CHF  | 6   | FEUTRINE   | Noel | 20 |
| 33650 | PANTOUFLE SAINT-NICOLAS 22X11H5,5CM             | 3,89 CHF  | 24   | 4,68 CHF  | 12  | FEUTRINE   | Noel | 20 |
| 33667 | MUG MITRE SAINT-NICOLAS ROUGE D8H11CM           | 4,17 CHF  | 12   | 5,01 CHF  | 6   | PORCELAINE | Noel | 20 |
| 33846 | SAC SAINT-NICOLAS 9,5X6,5H14CM +ANSE            | 5,29 CHF  | 12   | 6,30 CHF  | 6   | FEUTRINE   | Noel | 20 |
| 33847 | PANTOUFLE SAINT-NICOLAS 22,5X11H5CM             | 3,89 CHF  | 24   | 4,68 CHF  | 12  | FEUTRINE   | Noel | 20 |
| 33904 | MUG SAINT-NICOLAS CADEAUX D8H10CM               | 5,01 CHF  | 12   | 6,02 CHF  | 6   | PORCELAINE | Noel | 20 |
| 35051 | MUG BORD SAINT-NICOLAS INT./ANSE ROUGE D9H9,5CM | 6,97 CHF  | 12   | 8,37 CHF  | 6   | PORCELAINE | Noel | 20 |
| 71729 | RUBAN ECRU MOTIFS SAINT NICOLAS 15MMX25MT       | 12,60 CHF | 4    | 15,12 CHF | 2   | SATIN      | Noel | 20 |
| 71738 | RUBAN ROUGE SAINT NICOLAS 15MMX25MT             | 12,60 CHF | 4    | 15,12 CHF | 2   | SATIN      | Noel | 20 |

# Catalogue spécial Noël 2026



## Fourreau + boule PET

Ø 12cm

32266 | D12/150X19CM



31988 | 18X10H23CM



31989 | 26X12H32CM



32249 | 15X8H21CM

## Stickers



52276 | 150PCS 3,8X3,8CM



52280 | 150PCS 4,4X4,2CM



52706 | 150 PCS 3,8X3,8CM



13508 | 2H4,5CM

1. 1037997 | 22X16X5CM
2. 1038049 | 20,5X17X7CM
3. 1037993 | 12X12X12CM
4. 1038083 | 20X20X8CM



13520 | 2ASS D5CM



21

|         |  |           |     |          |     |            |      |    |
|---------|--|-----------|-----|----------|-----|------------|------|----|
| 1037993 | LIN ROUGE MAISON AVEC CORDE 12X12X12CM                 | 2,49 CHF  | 200 | 3,00 CHF | 50  | CARTON     | Noel | 21 |
| 1037997 | LIN ROUGE CESTO 22X16X5CM                              | 2,72 CHF  | 50  |          |     | CARTON     | Noel | 21 |
| 1038049 | LIN ROUGE CORBEILLE 20,5X17X7CM                        | 4,20 CHF  | 50  |          |     | CARTON     | Noel | 21 |
| 1038083 | LIN ROUGE MAISON AVEC CORDE 20X20X18CM                 | 6,10 CHF  | 30  |          |     | CARTON     | Noel | 21 |
| 13508   | 6 CLIPS SAINT NICOLAS 2H4,5CM                          | 0,90 CHF  | 288 | 1,06 CHF | 144 | BOIS       | Noel | 21 |
| 13520   | CLIP SMILEY BLC./KRAFT 2ASS D5CM                       | 0,39 CHF  | 48  | 0,48 CHF | 24  | CARTON     | Noel | 21 |
| 31988   | SAC SAINT NICOLAS FENT. N°1 18X10H23CM                 | 2,21 CHF  | 96  | 2,66 CHF | 48  | CARTON     | Noel | 21 |
| 31989   | SAC SAINT NICOLAS FENT. N°2 26X12H32CM                 | 2,49 CHF  | 96  | 3,00 CHF | 48  | CARTON     | Noel | 21 |
| 32249   | SAC SAINT-NICOLAS 15X8H21CM                            | 0,81 CHF  | 96  | 0,98 CHF | 48  | CARTON     | Noel | 21 |
| 32266   | BOULE PLEXI + FOURREAU SAINT-NICOLAS D12/15X10H19CM    | 1,93 CHF  | 100 | 2,32 CHF | 50  | PET/CARTON | Noel | 21 |
| 52276   | STICKERS SAINT NICOLAS FD CREME NP 150PCS PN 3,8X3,8CM | 16,77 CHF | 1   |          |     | PLASTIQUE  | Noel | 21 |
| 52280   | STICKERS NP SAINT NICOLAS 150PCS PN 4,4X4,2CM          | 16,77 CHF | 1   |          |     | PLASTIQUE  | Noel | 21 |
| 52706   | STICKERS P. SAINT NICOLAS 150 PCS PN 3,8X3,8CM         | 16,77 CHF | 1   |          |     | PLASTIQUE  | Noel | 21 |

**Catalogue spécial Noël 2026**



**A visser**



35013 | D7H6/13CM



35014 | D9,5H13/23CM



33934 | 12X10,5H2,5/22X12CM

**Feutrine**



35113 | 2ASS 10X7H14,5CM



33837 | 2ASS 12X7,5X18CM+ANSE

**Stickers**



53323 | 150PCS  D3,8CM



35037 | 9X9H9/13,5CM



35041 | D9H10CM + COUVERCLE SILICONE



35069 | D7H9CM



35055 | D8,5H13CM

22

|       |  |           |    |           |   |             |      |    |
|-------|--|-----------|----|-----------|---|-------------|------|----|
| 33837 | SAC PAIN D EPICES BONNET/ECHARPE 2ASS 12X7,5X18CM+ANSE         | 4,34 CHF  | 12 | 5,21 CHF  | 6 | FEUTRINE    | Noel | 22 |
| 33934 | 2 CONTENANT PAIN D EPICES S/PLANCHE BAMBOU 12X10,5H2,5/22X12CM | 12,29 CHF | 12 | 14,70 CHF | 4 | BAMBOU/PORC | Noel | 22 |
| 35013 | POT A VISSER GINGER N°1 D7H6/13CM                              | 5,85 CHF  | 12 | 7,08 CHF  | 4 | TISSU/PVC   | Noel | 22 |
| 35014 | POT A VISSER GINGER N°2 D9,5H13/23CM                           | 8,65 CHF  | 12 | 10,33 CHF | 4 | TISSU/PVC   | Noel | 22 |
| 35037 | CAGEOT MAISON GINGER 9X9H9/13,5CM                              | 5,57 CHF  | 12 | 6,69 CHF  | 6 | BOIS        | Noel | 22 |
| 35041 | GOBELET VERRE COUVER. GINGER D9H10CM+ COUVERCLE                | 6,41 CHF  | 12 | 7,70 CHF  | 6 | VERRE       | Noel | 22 |
| 35055 | GOBELET GINGER D8,5H13CM                                       | 6,97 CHF  | 12 | 8,37 CHF  | 6 | PORCELAINE  | Noel | 22 |
| 35069 | MUG GINGER D7H9CM  | 10,92 CHF | 12 | 13,10 CHF | 4 | CERAMIQUE   | Noel | 22 |
| 35113 | PANIER MAISON PAIN D'EPICES 2ASS 10X7H14,5CM                   | 4,62 CHF  | 12 | 5,57 CHF  | 6 | FEUTRINE    | Noel | 22 |

# Catalogue spécial Noël 2026

## Décor étalage



Bois

33656 | 28,5X2H12CM



53240 | 12X4,5H20CM



53241 | 14X5,5H22CM



32219 | 2ASS 18X8H23CM

53246 | 12,6X9,2H4,2CM

53247 | 18X4,5H5CM



53250 | 18,8X13,3H6,7CM



53249 | 14,3X10,3H8,3CM



|       |  |           |    |           |    |           |      |    |
|-------|--|-----------|----|-----------|----|-----------|------|----|
| 32219 | SAC ROUGE GINGER 2ASS N°1 18X8H23CM          | 2,02 CHF  | 96 | 2,41 CHF  | 48 | CARTON    | Noel | 23 |
| 33656 | PRESENTOIR FAMILLE PAIN D EPICES 28,5X2H12CM | 9,49 CHF  | 4  | 11,40 CHF | 2  | BOIS      | Noel | 23 |
| 53240 | POCHETTE ZIP "Red Ginger" 12X4,5H20CM        | 0,81 CHF  | 50 |           |    | ZINC      | Noel | 23 |
| 53241 | POCHETTE ZIP "Red Ginger" 14X5,5H22CM        | 0,84 CHF  | 50 |           |    | ZINC      | Noel | 23 |
| 53246 | BOITE ROUGE "Red Ginger" 12,6X9,2H4,2CM      | 6,13 CHF  | 24 | 7,34 CHF  | 12 | ZINC      | Noel | 23 |
| 53247 | BOITE COEUR ROUGE F. "Red Ginger" 18X4,5H5CM | 8,65 CHF  | 12 |           |    | ZINC      | Noel | 23 |
| 53249 | BOITE ANSE "Red Ginger" 14,3X10,3H8,3CM      | 9,49 CHF  | 16 | 10,61 CHF | 8  | ZINC      | Noel | 23 |
| 53250 | BOITE BLANCHE "Red Ginger" 18,8X13,3H6,7CM   | 11,17 CHF | 8  |           |    | ZINC      | Noel | 23 |
| 53323 | STICKERS "Ginger" NP. 150PCS PN D3,8CM       | 16,77 CHF | 1  |           |    | PLASTIQUE | Noel | 23 |

# Catalogue spécial Noël 2026



53254 | 12,8X9,4H4,2CM

53251 | 20,5X7,5H2,6CM



33838 | 2ASS 12,5X10,5,5CM+ANSE

## Fourreau + boule PET



31677 | 13X8H21CM



33970 | 12,5X9H3/19X13CM



32264 | D12/15X10H19CM



32216 | 18X8H23CM

## Assiette



33781 | 19X19H2,5CM



53253 | 13X8H6,5CM



33595 | 3ASS D9H11CM



22682 | D7,5H8CM



22681 | D8H6CM



52733 | 13X8H6,5CM



53316 | 17,5X8,5H10CM/D6H7CM

24

|       |  |           |     |           |    |              |      |    |
|-------|--|-----------|-----|-----------|----|--------------|------|----|
| 22681 | PHOTOPHORE FLEUR ROSE N°1 D8H6CM                 | 2,27 CHF  | 24  | 2,72 CHF  | 12 | VERRE        | Noel | 24 |
| 22682 | PHOTOPHORE FLEUR ROSE N°2 D7,5H8CM               | 2,82 CHF  | 24  | 3,38 CHF  | 12 | VERRE        | Noel | 24 |
| 31677 | BOITE MAISON BRUNE 13X8H21CM                     | 1,93 CHF  | 48  | 2,30 CHF  | 24 | CARTON       | Noel | 24 |
| 32216 | SAC MAISON GINGER 18X8H23CM                      | 2,02 CHF  | 96  | 2,41 CHF  | 48 | CARTON       | Noel | 24 |
| 32264 | BOULE PLEXI + FOURREAU GINGER D12/15X10H19CM     | 1,93 CHF  | 100 | 2,32 CHF  | 50 | PET/CARTON   | Noel | 24 |
| 33595 | MUG DISCO ROSE/FUCHSIA/LILAS 3ASS D9H11CM        | 7,53 CHF  | 12  | 9,04 CHF  | 6  | PORCELAINE   | Noel | 24 |
| 33781 | ASSIETTE COEUR GINGER ROSE BORD BRUN 19X19H2,5CM | 10,05 CHF | 8   | 12,01 CHF | 4  | PORCELAINE   | Noel | 24 |
| 33838 | SAC PAIN D EPICES ROSE 2ASS 12,5X7X15,5CM+ANSE   | 5,01 CHF  | 12  | 6,02 CHF  | 6  | FEUTRINE     | Noel | 24 |
| 33970 | 2 PLATS MAISON S/PLANCHE 12,5X9H3/19X13CM        | 12,57 CHF | 12  | 15,09 CHF | 4  | PORCELAINE/B | Noel | 24 |
| 52733 | BOITE RECT.ROSE GINGER ROSE 13X8H6,5CM           | 6,97 CHF  | 24  | 8,37 CHF  | 12 | ZINC         | Noel | 24 |
| 53251 | BOITE BLANCHE "Natural Ginger" 20,5X7,5H2,6CM    | 6,13 CHF  | 12  |           |    | ZINC         | Noel | 24 |
| 53253 | BOITE RECT.BRONZE "Natural Ginger" 13X8H6,5CM    | 6,97 CHF  | 24  | 8,37 CHF  | 12 | ZINC         | Noel | 24 |
| 53254 | BOITE BLANCHE "Natural Ginger" 12,8X9,4H4,2CM    | 6,13 CHF  | 24  | 7,34 CHF  | 12 | ZINC         | Noel | 24 |
| 53316 | PLANCHE + 2 POTS AUBERGINE 17,5X8,5H10CM/D6H7CM  | 8,09 CHF  | 4   |           |    | BAMBOU/VERRE | Noel | 24 |

**Catalogue spécial Noël 2026**



35015 - 29X29CM



Verre

22730 | D8H9CM +BOUCHON

22740 | D9H10CM

22736 | 12X8H10,5CM

22737 | 12X8H14,5CM

|       |   |           |    |           |    |            |      |    |
|-------|---|-----------|----|-----------|----|------------|------|----|
| 22730 | BONBONNIERE BOUCHON PAIN D'EPICES D8H9CM +BOUCHON | 5,57 CHF  | 24 | 6,72 CHF  | 12 | VERRE      | Noel | 25 |
| 22736 | BONBONNIERE RECT. COUVERCLE BOIS N°1 12X8H10,5CM  | 5,29 CHF  | 16 | 6,36 CHF  | 8  | VERRE      | Noel | 25 |
| 22737 | BONBONNIERE RECT. COUVERCLE BOIS N°2 12X8H14,5CM  | 5,66 CHF  | 16 | 6,78 CHF  | 8  | VERRE      | Noel | 25 |
| 22740 | PHOTOPHORE GINGER BRUN D9H10CM                    | 5,18 CHF  | 16 | 6,22 CHF  | 8  | VERRE      | Noel | 25 |
| 24701 | MUG FONDUE CHOCOLAT 2ASS PIQUE INCLUSE D10H11CM   | 8,93 CHF  | 12 | 10,72 CHF | 6  | PORCELAINE | Noel | 25 |
| 35015 | PELUCHE PAIN D'EPICES NOEUD ROSE 29X29CM          | 10,22 CHF | 6  | 12,24 CHF | 2  | TISSU      | Noel | 25 |

# Catalogue spécial Noël 2026



33789 | D9,5H10,5CM



53256 | 12,8X9,4H4,2CM



35040 | D8H11CM



33862 | 2ASS 11H12,5CM



33863 | 2ASS 14,5H20CM



33815 | D8,5H10,5CM



19814 | D20H1,5CM

19813 | D15H1CM



13551 | 6ASS 3H4,5CM

13568 | 3,5H4CM

26

|       |  |          |     |           |     |            |      |    |
|-------|--|----------|-----|-----------|-----|------------|------|----|
| 13551 | CLIP PAIN D'EPICES 6ASS 3H4,5CM                    | 0,64 CHF | 288 | 0,78 CHF  | 144 | BOIS       | Noel | 26 |
| 13568 | CLIP PAIN D'EPICES 3,5H4CM                         | 0,48 CHF | 288 | 0,56 CHF  | 144 | BOIS       | Noel | 26 |
| 19813 | PLATEAU CHOCOLAT N°1 D15H1CM                       | 5,94 CHF | 12  | 7,14 CHF  | 6   | METAL      | Noel | 26 |
| 19814 | PLATEAU CHOCOLAT N°2 D20H1,5CM                     | 9,77 CHF | 12  | 11,73 CHF | 6   | METAL      | Noel | 26 |
| 33789 | MUG GINGER MAISON ANSE BRUNE D9,5H10,5CM           | 7,81 CHF | 12  | 9,38 CHF  | 4   | PORCELAINE | Noel | 26 |
| 33815 | MUG BEIGE NORDIQUE ANSE ETOILE D8,5H10,5CM         | 4,45 CHF | 24  | 5,32 CHF  | 12  | PORCELAINE | Noel | 26 |
| 33862 | CHAUSSETTE NORDIQUE BEIGE/TAUPE 2ASS N°1 11H12,5CM | 2,38 CHF | 48  | 2,77 CHF  | 24  | TISSU      | Noel | 26 |
| 33863 | CHAUSSETTE NORDIQUE BEIGE/TAUPE 2ASS N°2 14,5H20CM | 4,73 CHF | 24  | 5,57 CHF  | 12  | TISSU      | Noel | 26 |
| 35040 | MUG GINGER BEIGE D8H11CM                           | 7,53 CHF | 12  | 9,04 CHF  | 6   | PORCELAINE | Noel | 26 |
| 53256 | BOITE BLANCHE "Ginger @ chocolat" 12,8X9,4H4,2CM   | 6,13 CHF | 24  | 7,34 CHF  | 12  | ZINC       | Noel | 26 |

# Catalogue spécial Noël 2026



35118 | 4 ASS 6X6H12CM



12903 | 5,5H9CM



32219 | 2 ASS 18X8H23CM

32220 | 2 ASS 26X10H32CM



31965 | 17X7,5H3CM



31966 | 17X7,5H3CM



33857 | 2 ASS 15X6,5H15CM+ANSE



24871 | D8H5/D9H4,5/10X8H5-28X10CM



13594 | 2 ASS 5H4,5CM

13591 | 4,5H4,5CM



41452

41603

41602

41108

68135

43199

40197

27

|       |   |           |     |           |    |              |      |    |
|-------|---|-----------|-----|-----------|----|--------------|------|----|
| 12903 | SPECULOOS ROUGE A SUSPENDRE PN 5,5H9CM                  | 0,28 CHF  | 48  |           |    | PLASTIQUE    | Noel | 27 |
| 13591 | CLIP TASSE GINGER 4,5H4,5CM                             | 0,62 CHF  | 96  | 0,73 CHF  | 48 | BOIS         | Noel | 27 |
| 13594 | CLIP GINGER 2ASS 5H4,5CM                                | 0,67 CHF  | 144 | 0,81 CHF  | 96 | BOIS         | Noel | 27 |
| 24871 | 3 BOLS BEIGE/TAUPE S/PLANCHE D8H5/D9H4,5/10X8H5-28X10CM | 12,85 CHF | 15  | 15,43 CHF | 5  | BAMBOU/PORC  | Noel | 27 |
| 31965 | BOITE RIGIDE RECT. PAIN D EPICES ROUGE 17X7,5H3CM       | 3,89 CHF  | 48  | 4,68 CHF  | 24 | CARTON       | Noel | 27 |
| 31966 | BOITE RIGIDE RECT. PAIN D EPICES ROSE 17X7,5H3CM        | 3,89 CHF  | 48  | 4,68 CHF  | 24 | CARTON       | Noel | 27 |
| 32219 | SAC ROUGE GINGER 2ASS N°1 18X8H23CM                     | 2,02 CHF  | 96  | 2,41 CHF  | 48 | CARTON       | Noel | 27 |
| 32220 | SAC ROUGE GINGER 2ASS N°2 26X10H32CM                    | 2,74 CHF  | 48  | 3,30 CHF  | 24 | CARTON       | Noel | 27 |
| 33857 | SAC MAISON PAIN D EPICES 2ASS 15X6,5H15CM+ANSE          | 6,58 CHF  | 12  | 7,90 CHF  | 6  | FEUTRINE     | Noel | 27 |
| 35118 | BOITE MAISON DROITE 4ASS 6X6H12CM                       | 6,41 CHF  | 24  | 7,70 CHF  | 12 | ZINC         | Noel | 27 |
| 40197 | 25MMX18MT RUBAN ETOILES ROUGE                           | 27,52 CHF | 5   | 33,04 CHF | 2  | LAITONNE     | Noel | 27 |
| 41108 | 25MMX18MT RUBAN DECO NOEL                               | 27,52 CHF | 5   | 33,04 CHF | 2  | NON LAITONNE | Noel | 27 |
| 41452 | 15MMX20MT RUBAN ECRU DECO NOEL ROUGE 15MMX20MT          | 18,28 CHF | 5   | 21,95 CHF | 2  | COTON        | Noel | 27 |
| 41602 | 25MMX15MT RUBAN ETOILES ANGES                           | 20,24 CHF | 4   | 24,30 CHF | 2  | NON LAITONNE | Noel | 27 |
| 41603 | 25MMX15MT RUBAN ROUGE ETOILES ANGES                     | 20,24 CHF | 4   | 24,30 CHF | 2  | NON LAITONNE | Noel | 27 |
| 43199 | RUBAN ECRU ETOILE ROUGE BORDEAUX 25MMX20MT              | 26,40 CHF | 3   | 31,70 CHF | 1  | NON LAITONNE | Noel | 27 |
| 68135 | RUBAN ECRU ETOILE ROUGE 15MMX20MT                       | 23,49 CHF | 3   | 28,20 CHF | 1  | NON LAITONNE | Noel | 27 |

# Catalogue spécial Noël 2026



35028 | D13H2,5CM

35030 | D9H5,5CM

35029 | D11H4,5CM

## Noeud sur twist

- 1 32233 26X20H3CM
- 2 32236 26X10H2CM
- 3 32237 40,5X14,5H2,5CM



28

|       |  |           |    |           |    |           |      |    |
|-------|--|-----------|----|-----------|----|-----------|------|----|
| 22719 | BONBONNIERE BOULE OR BRILLANT N°1 D8H10CM    | 8,37 CHF  | 12 | 10,05 CHF | 6  | VERRE     | Noel | 28 |
| 22720 | BONBONNIERE BOULE OR BRILLANT N°2 D11H13CM   | 12,01 CHF | 8  | 14,42 CHF | 4  | VERRE     | Noel | 28 |
| 32233 | ASSIETTE FEUILLE OR 26X20H3CM                | 4,20 CHF  | 16 | 5,04 CHF  | 8  | BOIS      | Noel | 28 |
| 32236 | ASSIETTE FEUILLE ALLONGEE OR 26X10H2CM       | 3,78 CHF  | 16 | 4,54 CHF  | 8  | BOIS      | Noel | 28 |
| 32237 | ASSIETTE FEUILLE BANANIER OR 40,5X14,5H2,5CM | 4,90 CHF  | 12 | 5,88 CHF  | 4  | BOIS      | Noel | 28 |
| 35028 | ASSIETTE BLANCHE BORD COEURS D13H2,5CM       | 6,30 CHF  | 12 | 7,53 CHF  | 4  | CERAMIQUE | Noel | 28 |
| 35029 | CONTENANT BLANC BORD COEURS D11H4,5CM        | 9,16 CHF  | 12 | 11,00 CHF | 6  | CERAMIQUE | Noel | 28 |
| 35030 | CONTENANT DROIT BLANC BORD COEURS D9H9,5CM   | 10,89 CHF | 12 | 13,10 CHF | 4  | CERAMIQUE | Noel | 28 |
| 71715 | NOEUD ECRU PAILLETES N°1 AVEC TWIST 8X9CM    | 0,98 CHF  | 96 | 1,18 CHF  | 48 | TISSU     | Noel | 28 |
| 71716 | NOEUD ECRU PAILLETES N°2 AVEC TWIST 15X17CM  | 2,77 CHF  | 48 | 3,33 CHF  | 24 | TISSU     | Noel | 28 |

# Catalogue spécial Noël 2026



**Bois**

**Porcelaine**

- 1. 32234 16,50x16,30x3,00
- 2. 33986 D9H6,5CM
- 3. 33987 D15H2CM
- 4. 33988 D20H2,5CM



22536 | 2ASS D7H20CM

22537 | 2ASS D9H25CM



22534 | 2ASS D8,5H10CM

22535 | 3ASS D10H12,5CM

29

|       |   |           |    |           |   |            |      |    |
|-------|---|-----------|----|-----------|---|------------|------|----|
| 22534 | PHOTOPHORE LOSANGE OR 2ASS N°2 D8,5H10CM      | 8,09 CHF  | 12 | 9,72 CHF  | 6 | VERRE      | Noel | 29 |
| 22535 | PHOTOPHORE LOSANGE OR 2ASS N°3 D10H12,5CM     | 10,75 CHF | 12 | 12,85 CHF | 6 | VERRE      | Noel | 29 |
| 22536 | PHOTOPHORE LOSANGE OR S/PIED 2ASS N°1 D7H20CM | 21,53 CHF | 8  | 25,79 CHF | 4 | VERRE      | Noel | 29 |
| 22537 | PHOTOPHORE LOSANGE OR S/PIED 2ASS N°2 D9H25CM | 24,89 CHF | 6  | 27,97 CHF | 2 | VERRE      | Noel | 29 |
| 32234 | ASSIETTE COEUR OR 16.5X16H3CM                 | 4,20 CHF  | 16 | 5,04 CHF  | 8 | BOIS       | Noel | 29 |
| 33986 | TASSE COEUR BORD/ANSE OR D9H6,5CM             | 8,37 CHF  | 12 | 10,05 CHF | 6 | PORCELAINE | Noel | 29 |
| 33987 | ASSIETTE COEUR BORD OR N°1 D15H2CM            | 6,69 CHF  | 12 | 8,01 CHF  | 6 | PORCELAINE | Noel | 29 |
| 33988 | ASSIETTE COEUR BORD OR N°2 D20H2,5CM          | 10,33 CHF | 12 | 12,40 CHF | 4 | PORCELAINE | Noel | 29 |

# Catalogue spécial Noël 2026



- 1. 53269 | 13,2X13,2H4,5CM
- 2. 53270 | 12,8X9,4H4,2CM
- 3. 53271 | 20,5X7,5H2,6CM
- 4. 53272 | 21,5X14H2CM
- 5. 53273 | 22X9,5H6,3CM
- 6. 53315 | 45X7,5H6CM
- 7. 33835 | 18X11H21CM + ANSE
- 8. 33848 | 16X8,5H15,5CM + ANSE

|       |   |           |    |           |    |            |      |    |
|-------|---|-----------|----|-----------|----|------------|------|----|
| 24913 | MUG BEIGE MAISONS/COEURS 2ASS D8H11CM               | 5,85 CHF  | 12 | 7,00 CHF  | 6  | PORCELAINE | Noel | 30 |
| 24914 | TASSE BEIGE MAISONS/COEURS 2ASS D11H7,5CM           | 7,25 CHF  | 12 | 8,65 CHF  | 6  | PORCELAINE | Noel | 30 |
| 33822 | ASSIETTE OVALE BEIGE 20X12H2CM                      | 6,30 CHF  | 12 | 7,28 CHF  | 6  | PORCELAINE | Noel | 30 |
| 33835 | SAC GRANDE MAISON BEIGE N°2 18X11H21CM+ANSE         | 9,77 CHF  | 12 | 11,70 CHF | 6  | FEUTRINE   | Noel | 30 |
| 33848 | SAC ETOILE ECRU GNOME OR FENETRE 16X8,5H15,5CM+ANSE | 6,41 CHF  | 12 | 7,70 CHF  | 6  | FEUTRINE   | Noel | 30 |
| 53269 | BOITE BLANCHE "Nuit étoilée" 13,2X13,2H4,5CM        | 7,25 CHF  | 24 | 8,65 CHF  | 12 | ZINC       | Noel | 30 |
| 53270 | BOITE BLANCHE "Nuit étoilée" 12,8X9,4H4,2CM         | 6,13 CHF  | 24 | 7,34 CHF  | 12 | ZINC       | Noel | 30 |
| 53271 | BOITE BLANCHE "Nuit étoilée" 20,5X7,5H2,6CM         | 6,13 CHF  | 12 |           |    | ZINC       | Noel | 30 |
| 53272 | BOITE BLANCHE "Nuit étoilée" 21,5X14H2CM            | 7,53 CHF  | 24 | 9,04 CHF  | 12 | ZINC       | Noel | 30 |
| 53273 | CAGEOT "Nuit étoilée" 22X9,5H6,3CM                  | 7,81 CHF  | 12 | 9,38 CHF  | 6  | BOIS       | Noel | 30 |
| 53315 | CAGEOT RECT. NATUREL "Nuit étoilée" 45X7,5H6CM      | 11,48 CHF | 24 | 14,28 CHF | 12 | BOIS       | Noel | 30 |

# Catalogue spécial Noël 2026



35085 | D31,5H12CM



## Céramique

35025 | D13H2,5CM

35026 | D11H4,5CM

35027 | D11H25CM



n°1 32223 | 4ASS 15X6H14,5CM

n°2 32224 | 4ASS 18X10H23CM

n°3 32225 | 4ASS 26X12H32CM



32226 | 2ASS 12X12H3CM

## Bouteille 1,6l



33797 | 19H29CM

33798 | 26H40CM

## Bouteille 75cl



47400

40153

47401

44416

41583

## Décor pliable en métal



35095 | 73H30CM

|       |   |           |    |           |    |              |      |    |
|-------|---|-----------|----|-----------|----|--------------|------|----|
| 32223 | SAC KRAFT THEME NOEL DORE 4ASS 15X6H14,5CM        | 1,37 CHF  | 96 | 1,65 CHF  | 48 | CARTON       | Noel | 31 |
| 32224 | SAC KRAFT THEME NOEL DORE 4ASS N°1 18X10H23CM     | 2,02 CHF  | 96 | 2,41 CHF  | 48 | CARTON       | Noel | 31 |
| 32225 | SAC KRAFT THEME NOEL DORE 4ASS N°2 26X12H32CM     | 2,74 CHF  | 48 | 3,30 CHF  | 24 | CARTON       | Noel | 31 |
| 32226 | BOITE RIGIDE KRAFT THEME NOEL DORE 2ASS 12X12H3CM | 3,89 CHF  | 48 | 4,68 CHF  | 24 | CARTON       | Noel | 31 |
| 33797 | CHAUSSETTE OSKARI N°1 19H29CM                     | 5,57 CHF  | 24 | 6,69 CHF  | 12 | TISSU        | Noel | 31 |
| 33798 | CHAUSSETTE OSKARI N°2 26H40CM                     | 9,66 CHF  | 12 | 11,59 CHF | 4  | TISSU        | Noel | 31 |
| 35025 | ASSIETTE TAUPE BORD FLEURS D13H2,5CM              | 6,30 CHF  | 12 | 7,53 CHF  | 4  | CERAMIQUE    | Noel | 31 |
| 35026 | CONTENANT TAUPE BORD FLEURS N°1 D11H4,5CM         | 9,16 CHF  | 12 | 11,00 CHF | 6  | CERAMIQUE    | Noel | 31 |
| 35027 | CONTENANT TAUPE BORD FLEURS N°2 D11H7,5CM         | 10,89 CHF | 12 | 13,10 CHF | 4  | CERAMIQUE    | Noel | 31 |
| 35085 | BOITE A CHAPEAU NOEUD BEIGE D31,5H12CM            | 16,77 CHF | 8  | 20,13 CHF | 4  | CARTON       | Noel | 31 |
| 35095 | MAISONNETTE OR ETALAGE ( PARAVENT) 72H30CM        | 26,57 CHF | 4  | 31,89 CHF | 2  | METAL        | Noel | 31 |
| 40153 | 25MMX18MT RUBAN NATUREL MAISON SAPIN              | 27,52 CHF | 5  | 33,04 CHF | 2  | RIGIDE       | Noel | 31 |
| 41583 | 25MMX25MT RUBAN BRUN CRISTAUX BLANCS              | 28,22 CHF | 3  | 33,85 CHF | 1  | NON LAITONNE | Noel | 31 |
| 44416 | RUBAN TREILLIS CUIVRE 25MMX10MT                   | 24,08 CHF | 5  | 28,90 CHF | 2  | LAITONNE     | Noel | 31 |
| 47400 | RUBAN CUIVRE 25MMX20MT                            | 16,80 CHF | 5  |           |    | LAITONNE     | Noel | 31 |
| 47401 | RUBAN CUIVRE CLAIR 25MMX20MT                      | 16,80 CHF | 5  |           |    | LAITONNE     | Noel | 31 |

# Catalogue spécial Noël 2026



|       |  |           |    |           |    |              |      |    |
|-------|--|-----------|----|-----------|----|--------------|------|----|
| 19747 | PANIER PAILLE ROND FLOCHES S/2 D24H15/27H19CM        | 21,82 CHF | 2  |           |    | PLASTIQUE    | Noel | 32 |
| 22647 | CONTENANT POMME DE PIN D5,5H7CM                      | 3,89 CHF  | 24 | 4,73 CHF  | 12 | VERRE        | Noel | 32 |
| 22708 | BONBONNIERE POMME DE PIN D9H13,5CM                   | 11,17 CHF | 8  | 13,41 CHF | 4  | VERRE        | Noel | 32 |
| 35016 | POT A VISSER RENNES BOUCLETTES 2ASS N°1 D7H6/20CM    | 6,02 CHF  | 12 | 7,22 CHF  | 4  | TISSU/PVC    | Noel | 32 |
| 35017 | POT A VISSER RENNES BOUCLETTES 2ASS N°2 D9,5H13/34CM | 10,61 CHF | 12 | 12,74 CHF | 4  | TISSU/PVC    | Noel | 32 |
| 35018 | RENNES BOUCLETTES 2ASS 20H36CM                       | 10,36 CHF | 12 | 12,46 CHF | 4  | TISSU/PVC    | Noel | 32 |
| 35091 | PANIER RENNE CORDES OR 8,5X7H16CM +ANSE              | 3,05 CHF  | 24 | 3,64 CHF  | 12 | FEUTRINE     | Noel | 32 |
| 35092 | PANIER RENNE BOUCLETTES 2ASS 9X6,5H19CM +ANSE        | 3,50 CHF  | 12 | 4,20 CHF  | 6  | FEUTRINE     | Noel | 32 |
| 40722 | 25MMX20MT RUBAN BRUN CERCLE CUIVRE                   | 37,74 CHF | 3  | 45,30 CHF | 1  | LAITONNE     | Noel | 32 |
| 41129 | 25MMX18MT RUBAN ETOILE BRUNE                         | 27,52 CHF | 5  | 33,04 CHF | 2  | LAITONNE     | Noel | 32 |
| 41139 | 15MMX18MT RUBAN ECRU GNOME BRUN 15MMX18MT            | 24,56 CHF | 5  | 29,46 CHF | 2  | NON LAITONNE | Noel | 32 |
| 41435 | 23MMX25MT RUBAN BRUN FEUILLE CUIVRE RELIEF 23MMX25MT | 24,81 CHF | 4  | 29,76 CHF | 2  | SATIN        | Noel | 32 |
| 71873 | RUBAN CABOSSE 25MMX25MT                              | 19,46 CHF | 4  | 23,35 CHF | 2  | SATIN        | Noel | 32 |

# Catalogue spécial Noël 2026



35043 | D8H10CM



22669 | D9/12H17CM

- 1. 53297 | 20,5X25H2,6CM
- 2. 53298 | 34,5X6,5H2,5CM
- 3. 53299 | 22X9,5H6,3CM
- 4. 33821 | 2ASS H33/45CM



1197756 | 23X17X8CM



19107 | S/2 17X13H8/20X15H8CM



1197748 | 9X9X38,5CM



1197746 | 18X9X38,5CM



1197747 | 27X9X38,5CM

|         |   |           |    |           |   |            |        |      |    |
|---------|---|-----------|----|-----------|---|------------|--------|------|----|
| 1197746 | MAGIC FOREST B.SCATOLA 2 BOUTEILLES F. 18X9X38,5CM      | 2,77 CHF  | 30 |           |   |            | CARTON | Noel | 33 |
| 1197747 | MAGIC FOREST B.SCATOLA 3 BOUTEILLES F. 27X9X38,5CM      | 3,84 CHF  | 30 |           |   |            | CARTON | Noel | 33 |
| 1197748 | MAGIC FOREST B.SCATOLA 1 BOUTEILLE F POIGNEE 9X9H38,5CM | 1,99 CHF  | 50 |           |   |            | CARTON | Noel | 33 |
| 1197756 | MAGIC FORESTVASSOIO 23X17X8CM                           | 2,66 CHF  | 50 |           |   |            | CARTON | Noel | 33 |
| 19107   | PANIER OVALE CORTEN S/2 17X13H8/20X15H8CM               | 21,25 CHF | 12 | 25,51 CHF | 4 | ZINC       | Noel   | 33   |    |
| 22669   | BONBONNIERE SAPIN BRONZE METALLISE D9/12H17CM           | 11,73 CHF | 12 | 13,97 CHF | 6 | VERRE      | Noel   | 33   |    |
| 33821   | 4 SAPINS ETALAGE NOIR/MOKA +AMANTS 2ASS H33/45CM        | 36,90 CHF | 2  | 44,24 CHF | 1 | CARTON     | Noel   | 33   |    |
| 35043   | MUG RENNES CHALETS D8H10CM                              | 7,53 CHF  | 12 | 9,21 CHF  | 6 | PORCELAINE | Noel   | 33   |    |
| 53297   | BOITE BLANCHE "Marché de Noël" 20,5X7,5H2,6CM           | 6,13 CHF  | 12 |           |   | ZINC       | Noel   | 33   |    |
| 53298   | BOITE "Marché de Noël" 34,5X6,5H2,5CM                   | 8,09 CHF  | 16 | 9,66 CHF  | 8 | ZINC       | Noel   | 33   |    |
| 53299   | CAGEOT "Marché de Noël" 22X9,5H6,3CM                    | 7,81 CHF  | 12 | 9,38 CHF  | 6 | BOIS       | Noel   | 33   |    |

# Catalogue spécial Noël 2026



|       |  |           |     |           |    |              |      |    |
|-------|--|-----------|-----|-----------|----|--------------|------|----|
| 22702 | BONBONNIERE GLAND OR/BLANC MAT N°1 D7H12CM                         | 8,37 CHF  | 12  | 10,05 CHF | 6  | VERRE        | Noel | 34 |
| 22703 | BONBONNIERE GLAND OR/BLANC MAT N°2 D11H15CM                        | 11,17 CHF | 8   | 13,41 CHF | 4  | VERRE        | Noel | 34 |
| 32050 | BOITE RECT. CHOCOLAT FNT. BLANCHE 25X13,7H1,8CM                    | 1,93 CHF  | 100 | 2,32 CHF  | 50 | CARTON       | Noel | 34 |
| 32057 | BOITE CARRE 9 CHOCOLAT FNT. BLANCHE 13X13H3CM                      | 3,33 CHF  | 100 | 4,00 CHF  | 50 | CARTON       | Noel | 34 |
| 32172 | VALISETTE PET + BOITE BLC. N°1 "Spécialement pour toi" 9.5X7H7.5CM | 1,09 CHF  | 96  | 1,32 CHF  | 48 | PVC          | Noel | 34 |
| 32173 | VALISETTE PET + BOITE BLC. N°2 "Spécialement pour toi" 12X9H9CM    | 1,37 CHF  | 96  | 1,65 CHF  | 48 | PVC          | Noel | 34 |
| 33691 | BOL BLANC/OR N°1 D11,5H6CM   | 7,25 CHF  | 12  | 8,71 CHF  | 4  | CERAMIQUE    | Noel | 34 |
| 33692 | BOL BLANC/OR N°2 D15H8CM   | 11,17 CHF | 8   | 13,41 CHF | 4  | CERAMIQUE    | Noel | 34 |
| 33980 | TASSE BORD/ANSE OR D9,5H7CM  | 6,13 CHF  | 12  | 7,36 CHF  | 6  | PORCELAINE   | Noel | 34 |
| 33981 | TASSE LOSANGES BORD OR D5,5H5,5CM                                  | 5,04 CHF  | 12  | 6,05 CHF  | 6  | PORCELAINE   | Noel | 34 |
| 33982 | TASSE BORD/ANSE OR +SOUS PLAT D5H5/14X12,5CM                       | 9,21 CHF  | 12  | 11,06 CHF | 6  | PORCELAINE   | Noel | 34 |
| 53317 | PLANCHE + 2 POTS CUIVRE 17,5X8,5H1CM/D6H7CM                        | 8,09 CHF  | 4   |           |    | BAMBOU/VERRE | Noel | 34 |

# Catalogue spécial Noël 2026



|       |  |           |     |           |    |               |      |    |
|-------|--|-----------|-----|-----------|----|---------------|------|----|
| 17188 | PIQUET BOULE/FEUILLE OR H10CM +TIGE                | 0,81 CHF  | 100 | 0,98 CHF  | 50 | FLEUR ARTIFIC | Noel | 35 |
| 17190 | PIQUET BOULE DOUBLE FEUILLE OR H10CM +TIGE         | 1,23 CHF  | 100 | 1,48 CHF  | 50 | FLEUR ARTIFIC | Noel | 35 |
| 24167 | MUG "Félicitations" BLANC POIS OR D8H10,5CM        | 5,57 CHF  | 12  | 6,69 CHF  | 6  | PORCELAINE    | Noel | 35 |
| 31790 | BOITE RONDE BLANCHE D16H13CM                       | 11,17 CHF | 8   | 13,41 CHF | 4  | CARTON        | Noel | 35 |
| 33765 | BOL NENUPHAR OR/BLANC D12,5H5,5CM                  | 8,37 CHF  | 12  | 10,05 CHF | 6  | CERAMIQUE     | Noel | 35 |
| 33766 | ASSIETTE NENUPHAR 3 COMPART. OR/BLANC D22H3,5CM    | 14,53 CHF | 6   | 17,44 CHF | 2  | CERAMIQUE     | Noel | 35 |
| 33767 | ASSIETTE SAPIN OR/BLANC 33,5X30H3,5CM              | 23,80 CHF | 4   | 27,97 CHF | 2  | CERAMIQUE     | Noel | 35 |
| 33774 | NENUPHAR TRIO OR/BLANC 20X16H3,5CM                 | 9,77 CHF  | 8   | 11,70 CHF | 4  | PORCELAINE    | Noel | 35 |
| 33912 | MUG ARABESQUE OR 4ASS D8,5H9CM                     | 6,97 CHF  | 24  | 8,37 CHF  | 12 | PORCELAINE    | Noel | 35 |
| 33939 | PLANCHE A FROMAGE COUTEAU OR 27X23H1CM             | 22,37 CHF | 6   | 26,85 CHF | 2  | BAMBOU/PORC   | Noel | 35 |
| 33977 | 2 BOLS BORD DORE S/PLANCHE D8,5H4,5/19X9,5CM       | 12,57 CHF | 12  | 15,09 CHF | 4  | PORCELAINE/B  | Noel | 35 |
| 33978 | 3 BOLS BORD DORE S/PLANCHE D8,5H4,5/28,5X9,5CM     | 16,49 CHF | 6   | 19,74 CHF | 3  | PORCELAINE/B  | Noel | 35 |
| 52781 | STICKERS "Meilleurs Voeux" OR NP. 500PCS PN D3,8CM | 39,17 CHF | 1   |           |    | PLASTIQUE     | Noel | 35 |

**Catalogue spécial Noël 2026**



- 1. 53275 | 10,5X7H2,8CM |
- 2. 53274 | 20,5X7,5H2,6CM |
- 3. 53276 | 16,5X14H2,7CM |
- 4. 53277 | 23X18,5H2,3CM |
- 5. 53279 | 10,5X10,5H12CM |
- 6. 53278 | 22X9,5H6,3CM |



33790 | 10X6H9CM

33792 | 14X9H19CM

19708 | 34X23H7/28CM

Carton

31745 | 13X8H21CM

35053 | 2ASS D10H6,5CM

|       |   |           |    |           |    |               |      |    |
|-------|---|-----------|----|-----------|----|---------------|------|----|
| 19708 | PANIER OVALE BORDEAUX ANSE BOIS 34X23H17/28CM               | 19,01 CHF | 10 | 22,82 CHF | 5  | FEUTRINE      | Noel | 38 |
| 31745 | BOITE MAISON BORDEAUX 13X8H21CM                             | 1,93 CHF  | 48 | 2,30 CHF  | 24 | CARTON        | Noel | 38 |
| 33790 | BOTTE OSKARI N°1 10X6H9CM                                   | 2,77 CHF  | 48 | 3,22 CHF  | 12 | PLASTIQUE/TIS | Noel | 38 |
| 33792 | BOTTE OSKARI N°3 14X9H19CM                                  | 6,69 CHF  | 12 | 8,04 CHF  | 4  | PLASTIQUE/TIS | Noel | 38 |
| 35053 | MUG TEDDY 2ASS D10H6,5CM                                    | 7,53 CHF  | 12 | 8,93 CHF  | 6  | PORCELAINE    | Noel | 38 |
| 53274 | BOITE BLANCHE "Teddy velours" 20,5X7,5H2,6CM                | 6,13 CHF  | 12 |           |    | ZINC          | Noel | 38 |
| 53275 | "BOITE PLATE BLANCHE GLISSIERE "Teddy velours" 10,5X7H2,8CM | 4,73 CHF  | 48 | 5,57 CHF  | 24 | ZINC          | Noel | 38 |
| 53276 | BOITE BLANCHE "Teddy velours" 16,5X14H2,7CM                 | 6,69 CHF  | 24 | 8,09 CHF  | 12 | ZINC          | Noel | 38 |
| 53277 | BOITE PLATE BLC. FTE PVC "Teddy velours" 23X18,5H2,3CM      | 10,05 CHF | 16 | 12,01 CHF | 8  | ZINC          | Noel | 38 |
| 53278 | CAGEOT "Teddy velours" 22X9,5H6,3CM                         | 7,25 CHF  | 12 | 8,68 CHF  | 6  | BOIS          | Noel | 38 |
| 53279 | COFFRE FERMETURE GLISSIERE "Teddy velours" 10,5X10,5H12CM   | 6,72 CHF  | 12 |           |    | BOIS          | Noel | 38 |

# Catalogue spécial Noël 2026



|       |  |           |    |           |    |           |      |    |
|-------|--|-----------|----|-----------|----|-----------|------|----|
| 22715 | BONBONNIERE BOULE VELOURS BORDEAUX N°1 D8H10CM                 | 8,37 CHF  | 12 | 10,05 CHF | 6  | VERRE     | Noel | 39 |
| 22716 | BONBONNIERE BOULE VELOURS BORDEAUX N°2 D11H13CM                | 11,17 CHF | 8  | 13,41 CHF | 4  | VERRE     | Noel | 39 |
| 31990 | CESTO OVALE ETOILES ROUGES S/2 20X12H7/23X14H8CM +ANSE         | 10,05 CHF | 12 | 12,04 CHF | 6  | CARTON    | Noel | 39 |
| 35010 | POT A VISSER TEDDY VELOURS N°1 D7H6/14CM                       | 6,13 CHF  | 12 | 7,36 CHF  | 4  | TISSU/PVC | Noel | 39 |
| 35011 | POT A VISSER TEDDY VELOURS N°2 D9,5H13/26CM                    | 9,10 CHF  | 12 | 10,89 CHF | 4  | TISSU/PVC | Noel | 39 |
| 35012 | TEDDY VELOURS 20H34CM  | 14,53 CHF | 8  | 17,44 CHF | 4  | TISSU     | Noel | 39 |
| 35096 | PANIER SAPIN VELOURS BORDEAUX NOEUD VERT 14,5X7,5H13,5CM +ANSE | 5,18 CHF  | 12 | 6,22 CHF  | 6  | FEUTRINE  | Noel | 39 |
| 35097 | LUGE VELOURS BORDEAUX NOEUD VERT 21X8,5H14CM                   | 7,14 CHF  | 8  | 8,65 CHF  | 4  | FEUTRINE  | Noel | 39 |
| 35098 | PANIER TEDDY VELOURS BDX. N°1 12,5X7,5H14CM +ANSE              | 5,29 CHF  | 12 | 6,36 CHF  | 6  | FEUTRINE  | Noel | 39 |
| 35099 | PANIER TEDDY VELOURS BDX. N°2 16X8,5H17CM +ANSE                | 6,13 CHF  | 12 | 7,42 CHF  | 6  | FEUTRINE  | Noel | 39 |
| 53326 | STICKERS OURS "Joyeuses Fêtes" NP. 150PCS PN D3,8CM            | 16,77 CHF | 1  |           |    | PLASTIQUE | Noel | 39 |
| 71718 | NOEUD BORDEAUX PAILLETES N°1 AVEC TWIST 8X9CM                  | 0,98 CHF  | 96 | 1,18 CHF  | 48 | TISSU     | Noel | 39 |
| 71719 | NOEUD BORDEAUX PAILLETES N°2 AVEC TWIST 15X17CM                | 2,77 CHF  | 48 | 3,33 CHF  | 24 | TISSU     | Noel | 39 |

# Catalogue spécial Noël 2026



1. 33971 D9H5,5/20X10CM
2. 33972 D9H5,5/28,5X10CM
3. 22736 12X8H10,5CM
4. 22737 12X8H14,5CM
5. 31672 12X12H12CM
6. 31673 20X20H20CM
7. 31664 13X4,5H18CM

|       |  |           |    |           |    |             |      |    |
|-------|--|-----------|----|-----------|----|-------------|------|----|
| 22736 | BONBONNIERE RECT. COUVERCLE BOIS N°1 12X8H10,5CM         | 5,29 CHF  | 16 | 6,36 CHF  | 8  | VERRE       | Noel | 40 |
| 22737 | BONBONNIERE RECT. COUVERCLE BOIS N°2 12X8H14,5CM         | 5,66 CHF  | 16 | 6,78 CHF  | 8  | VERRE       | Noel | 40 |
| 31664 | BOITE BLANCHE FENT. CERCLES OR 13X4,5H18CM               | 2,21 CHF  | 48 | 2,66 CHF  | 24 | CARTON      | Noel | 40 |
| 31672 | SAC CARRE BLANC FENT. CERCLES OR N°1 12X12H12CM          | 2,10 CHF  | 96 | 2,52 CHF  | 48 | CARTON      | Noel | 40 |
| 31673 | SAC CARRE BLANC FENT. CERCLES OR N°2 20X20H20CM          | 2,77 CHF  | 96 | 3,33 CHF  | 48 | CARTON      | Noel | 40 |
| 32230 | BOITE 4 COMPART. COUVERCLE TRANSP. DORE 16X16H5CM        | 12,85 CHF | 8  | 15,40 CHF | 4  | BOIS-PLEXI  | Noel | 40 |
| 32231 | BOITE RECT. COUVERCLE TRANSP. DORE 16X8,5H5CM            | 8,93 CHF  | 12 | 10,64 CHF | 4  | BOIS-PLEXI  | Noel | 40 |
| 32232 | BOITE ALLONGEE COUVERCLE TRANSP. DORE 22X8,5H5CM         | 9,94 CHF  | 12 | 11,93 CHF | 4  | BOIS-PLEXI  | Noel | 40 |
| 33511 | PLANCHE SAPIN 28,5X20H1,5CM                              | 10,05 CHF | 12 | 12,01 CHF | 4  | BAMBOU      | Noel | 40 |
| 33971 | 2 BONBONNIERES COUV. SAPIN S/PLANCHE D9H5,5/20X10CM      | 11,45 CHF | 12 | 13,69 CHF | 4  | VERRE/BAMBO | Noel | 40 |
| 33972 | 3 BONBONNIERES COUV. SAPIN OR S/PLANCHE D9H5,5/28,5X10CM | 16,77 CHF | 8  | 20,13 CHF | 4  | VERRE/BAMBO | Noel | 40 |
| 33976 | PLANCHE SAPIN 25X22H1,5CM                                | 7,14 CHF  | 16 | 8,57 CHF  | 4  | BAMBOU      | Noel | 40 |

# Catalogue spécial Noël 2026



35019 | 2ASS 13H26CM



1. 32258 | 23X16H7,5CM 2. 32259 | 33X20H7,5CM



31968 | 16X10,5H5CM



41454 41000 41530 45188 41478

41

|       |  |           |    |           |    |              |      |    |
|-------|--|-----------|----|-----------|----|--------------|------|----|
| 31968 | COFFRET BAMBOU 3PCS OUVRE-BOUEITTE 16X10,5H5CM | 18,45 CHF | 2  |           |    | BOIS         | Noel | 41 |
| 32258 | CESTO BLANC TACHES OR N°1 23X16H7,5CM          | 2,77 CHF  | 36 | 3,33 CHF  | 12 | CARTON       | Noel | 41 |
| 32259 | CESTO BLANC TACHES OR N°2 33X20H7,5CM          | 4,17 CHF  | 36 | 5,01 CHF  | 12 | CARTON       | Noel | 41 |
| 35019 | GNOME BEIGE 2ASS 13H26CM                       | 5,57 CHF  | 12 | 7,20 CHF  | 4  | TISSU        | Noel | 41 |
| 41000 | 25MMX20MT RUBAN VOILE ETOILES OR               | 25,12 CHF | 5  | 30,16 CHF | 2  | LAITONNE     | Noel | 41 |
| 41454 | 25MMX20MT RUBAN OR EVENTAIL OR 25MMX20MT       | 25,37 CHF | 5  | 30,44 CHF | 2  | VOILE        | Noel | 41 |
| 41478 | 23MMX25MT RUBAN OR CRISTAUX OR 23MMX25MT       | 22,48 CHF | 4  | 26,99 CHF | 2  | SATIN        | Noel | 41 |
| 41530 | 25MMX25MT RUBAN ETOILE OR RELIEF               | 27,16 CHF | 4  | 32,59 CHF | 2  | SATIN        | Noel | 41 |
| 45188 | RUBAN TREILLIS OR 40MMX20MT                    | 20,24 CHF | 5  | 24,28 CHF | 2  | NON LAITONNE | Noel | 41 |

# Catalogue spécial Noël 2026



|       |   |           |    |           |    |              |      |    |
|-------|---|-----------|----|-----------|----|--------------|------|----|
| 19015 | PANIER CARRE VERT FONCE 19X19H9CM                 | 3,05 CHF  | 48 | 3,64 CHF  | 24 | POLYESTER    | Noel | 42 |
| 19016 | PANIER RECT. VERT FONCE N°1 22X14H7CM             | 2,10 CHF  | 48 | 2,49 CHF  | 24 | POLYESTER    | Noel | 42 |
| 19017 | PANIER RECT. VERT FONCE N°2 26X18H6CM             | 2,77 CHF  | 48 | 3,33 CHF  | 24 | POLYESTER    | Noel | 42 |
| 19018 | PANIER RECT. VERT FONCE N°3 34X28H8CM             | 5,01 CHF  | 24 | 6,02 CHF  | 12 | POLYESTER    | Noel | 42 |
| 31992 | BOITE SAPIN VERT RUBAN OR 18X11H6,5CM             | 6,30 CHF  | 12 | 7,53 CHF  | 6  | CARTON       | Noel | 42 |
| 31993 | CESTO VERT SAPIN 33X20H6,5CM                      | 8,09 CHF  | 36 | 9,72 CHF  | 12 | CARTON       | Noel | 42 |
| 33868 | PLATEAU + CHIEN/SAPIN 2ASS 12X6,5H14/16CM         | 7,81 CHF  | 8  | 9,38 CHF  | 4  | METAL        | Noel | 42 |
| 33870 | CHIEN BONNET ETALAGE VERT PALE 17X4H24CM          | 7,56 CHF  | 4  | 9,07 CHF  | 2  | BOIS         | Noel | 42 |
| 35059 | MUG VERT FONCE SAPIN OR D9H11CM                   | 8,37 CHF  | 12 | 10,05 CHF | 6  | PORCELAINE   | Noel | 42 |
| 41054 | 25MMX20MT RUBAN VERT MARTELE 25MMX20MT            | 14,34 CHF | 5  | 17,19 CHF | 2  | LAITONNE     | Noel | 42 |
| 41149 | 25MMX18MT RUBAN EMERAUDE ETOILE OR 25MMX18MT      | 27,52 CHF | 5  | 33,04 CHF | 2  | NON LAITONNE | Noel | 42 |
| 41171 | 40MMX15MT RUBAN VERT BRANCHE BOULE VERT 40MMX15MT | 28,64 CHF | 3  | 34,38 CHF | 1  | LAITONNE     | Noel | 42 |
| 41176 | 15MMX18MT RUBAN MARTELE VERT BRILLANT 15MMX18MT   | 24,56 CHF | 5  | 29,46 CHF | 2  | NON LAITONNE | Noel | 42 |
| 42120 | RUBAN VERT BRANCHES 25MMX18MT                     | 27,52 CHF | 5  | 33,04 CHF | 2  | NON LAITONNE | Noel | 42 |
| 44579 | RUBAN DAMIER OR 25MMX25MT                         | 22,79 CHF | 4  | 27,36 CHF | 2  | RIGIDE       | Noel | 42 |

# Catalogue spécial Noël 2026



- 1. 32278 | 36X25,5X8CM
- 2. 32277 | 25,5X15,5X8CM
- 3. 32275 | 34X18,5X9CM 2 bouteilles
- 4. 32276 | 34X28X9CM 3 bouteilles



|       |  |           |     |           |    |               |      |    |
|-------|--|-----------|-----|-----------|----|---------------|------|----|
| 17170 | PIQUET BOULE/BAIES VERTES D2,5H8CM +TIGE                     | 1,57 CHF  | 100 | 1,90 CHF  | 50 | FLEUR ARTIFIC | Noel | 43 |
| 17191 | PIQUET BOULE OR FEUILLE OR/VERT H10CM +TIGE                  | 1,23 CHF  | 100 | 1,48 CHF  | 50 | FLEUR ARTIFIC | Noel | 43 |
| 19134 | BOITE OVALE VERT FONCE COUV. BOIS 12X6,5H14CM                | 6,97 CHF  | 24  | 8,37 CHF  | 6  | ZINC          | Noel | 43 |
| 19136 | BOITE RECT. VERT FONCE COUV. BOIS 20X8,5H8,5CM               | 10,05 CHF | 12  | 12,01 CHF | 6  | ZINC          | Noel | 43 |
| 32244 | MINI BOITE SAPIN FONCE 5X5H5CM                               | 0,81 CHF  | 96  | 0,98 CHF  | 48 | CARTON        | Noel | 43 |
| 32245 | SAC FNT. SAPIN FONCE N°1 18X10H23CM                          | 1,93 CHF  | 96  | 2,32 CHF  | 48 | CARTON        | Noel | 43 |
| 32246 | SAC FNT. SAPIN FONCE N°2 26X12H32CM                          | 2,49 CHF  | 96  | 3,00 CHF  | 48 | CARTON        | Noel | 43 |
| 32275 | BOITE 2 BOUTEILLES CANTINETTA VERTE SAPIN BOULES 34X18,5X9CM | 4,17 CHF  | 30  |           |    | CARTON        | Noel | 43 |
| 32276 | BOITE 3 BOUTEILLES CANTINETTA VERTE SAPIN BOULES 34X28X9CM   | 5,57 CHF  | 30  |           |    | CARTON        | Noel | 43 |
| 32277 | CORBEILLE VERT SAPIN BOULES 25,5X15,5X8CM                    | 1,82 CHF  | 50  |           |    | CARTON        | Noel | 43 |
| 32278 | CORBEILLE VERT SAPIN BOULES 36X25,5X8CM                      | 2,66 CHF  | 50  |           |    | CARTON        | Noel | 43 |
| 33804 | SAPIN OSKARI DECO H42CM                                      | 10,05 CHF | 6   | 12,01 CHF | 2  | TISSU         | Noel | 43 |
| 53257 | BOITE RONDE NOIRE "Mon beau sapin" D14,6H7CM                 | 7,25 CHF  | 24  | 8,65 CHF  | 12 | ZINC          | Noel | 43 |
| 53258 | BOITE NOIRE "Mon beau sapin" 18,8X13,3H6,7CM                 | 11,17 CHF | 8   |           |    | ZINC          | Noel | 43 |
| 53260 | BOITE OR "Mon beau sapin" 12,6X9,2H4,2CM                     | 6,13 CHF  | 24  | 7,34 CHF  | 12 | ZINC          | Noel | 43 |
| 53264 | BOITE OR "Mon beau sapin" 21,5X14H2CM                        | 7,53 CHF  | 24  | 9,04 CHF  | 12 | ZINC          | Noel | 43 |

# Catalogue spécial Noël 2026



mon beau  
**Sapin**

|       |   |           |     |           |    |               |      |    |
|-------|---|-----------|-----|-----------|----|---------------|------|----|
| 17160 | PIQUET SAPIN GLAND/POMME DE PIN BOULE OR H9CM +TIGE | 1,26 CHF  | 100 | 1,51 CHF  | 50 | FLEUR ARTIFIC | Noel | 44 |
| 22723 | CONTENANT SAPIN VERT FONCE N°1 10X9H5CM             | 3,22 CHF  | 24  | 3,89 CHF  | 12 | VERRE         | Noel | 44 |
| 22724 | CONTENANT SAPIN VERT FONCE N°2 14X13H6CM            | 6,02 CHF  | 12  | 7,22 CHF  | 4  | VERRE         | Noel | 44 |
| 32115 | CONTENANT ONDULE EUCALYPTUS D18,5H14CM              | 4,17 CHF  | 20  | 5,01 CHF  | 10 | CARTON        | Noel | 44 |
| 32118 | CONTENANT OVALE ONDULE EUCALYPTUS 35X26H14CM        | 5,57 CHF  | 20  | 6,69 CHF  | 10 | CARTON        | Noel | 44 |
| 33670 | TASSE SAPIN NOEL D8H6CM                             | 5,57 CHF  | 12  | 6,69 CHF  | 6  | PORCELAINE    | Noel | 44 |
| 35042 | GOBELET VERRE COUVER. SAPIN D9H10CM+ COUVERCLE      | 6,41 CHF  | 12  | 7,70 CHF  | 6  | VERRE         | Noel | 44 |
| 35077 | BOL BLANC BORD NOEUD N°1 D10H7CM                    | 6,13 CHF  | 12  | 7,36 CHF  | 4  | CERAMIQUE     | Noel | 44 |
| 35078 | BOL BLANC BORD NOEUD N°2 D12,5H8,5CM                | 8,37 CHF  | 12  | 10,05 CHF | 4  | CERAMIQUE     | Noel | 44 |
| 35079 | BOL VERT FONCE BORD NOEUD N°1 D10H7CM               | 6,13 CHF  | 12  | 7,36 CHF  | 4  | CERAMIQUE     | Noel | 44 |
| 35080 | BOL VERT FONCE BORD NOEUD N°2 D12,5H8,5CM           | 8,37 CHF  | 12  | 10,05 CHF | 4  | CERAMIQUE     | Noel | 44 |
| 35093 | BONBONNIERE MAISONNETTE VERTE N°1 10X9,5H15CM       | 6,13 CHF  | 12  | 7,36 CHF  | 6  | FEUTRINE      | Noel | 44 |
| 35094 | BONBONNIERE MAISONNETTE VERTE N°2 12,5X11,5H18CM    | 7,81 CHF  | 12  | 9,38 CHF  | 6  | FEUTRINE      | Noel | 44 |
| 35108 | BOITE RONDE CADEAU NOEUD VERT D12,5H10,5CM          | 6,16 CHF  | 12  | 7,39 CHF  | 6  | FEUTRINE      | Noel | 44 |
| 41157 | 25MMX18MT RUBAN CRISTAUX OR 25MMX18MT               | 27,52 CHF | 5   | 33,04 CHF | 2  | LAITONNE      | Noel | 44 |
| 41177 | 15MMX18MT RUBAN ETOILE GRIS OR 15MMX18MT            | 24,56 CHF | 5   | 29,46 CHF | 2  | LAITONNE      | Noel | 44 |
| 41461 | 38MMX20MT RUBAN TREILLIS VERT OR 38MMX20MT          | 13,33 CHF | 5   | 15,99 CHF | 2  | NON LAITONNE  | Noel | 44 |
| 41470 | 15MMX25MT RUBAN VERT BOULES OR 15MMX25MT            | 19,07 CHF | 4   | 22,88 CHF | 2  | NON LAITONNE  | Noel | 44 |
| 41476 | 23MMX25MT RUBAN VERT CRISTAUX OR 23MMX25MT          | 22,48 CHF | 4   | 26,99 CHF | 2  | SATIN         | Noel | 44 |
| 41596 | 25MMX20MT RUBAN VERT ETOILE OR 25MMX20MT            | 19,21 CHF | 5   | 23,04 CHF | 2  | NON LAITONNE  | Noel | 44 |

**Catalogue spécial Noël 2026**



- 1. 22721 | D8H10CM
- 2. 22722 | D11H13CM
- 3. 53266 | 12,6X9,2H4,2CM
- 4. 53268 | 21,5X14H2CM
- 5. 22662 | D9,5H24CM

33867 | 16X8,5H15,5CM+ANSE

|       |  |           |    |           |    |          |      |    |
|-------|--|-----------|----|-----------|----|----------|------|----|
| 22662 | SAPIN METALLISE VERT DECO D9,5H24CM                | 14,81 CHF | 4  | 17,78 CHF | 2  | VERRE    | Noel | 45 |
| 22721 | BONBONNIERE BOULE VERT FONCE BRILLANT N°1 D8H10CM  | 8,37 CHF  | 12 | 10,05 CHF | 6  | VERRE    | Noel | 45 |
| 22722 | BONBONNIERE BOULE VERT FONCE BRILLANT N°2 D11H13CM | 12,01 CHF | 8  | 14,42 CHF | 4  | VERRE    | Noel | 45 |
| 33867 | SAC ETOILE VERT FENETRE 16X8,5H15,5CM+ANSE         | 5,57 CHF  | 12 | 6,69 CHF  | 6  | FEUTRINE | Noel | 45 |
| 53266 | BOITE OR "Sapins" 12,6X9,2H4,2CM                   | 6,13 CHF  | 24 | 7,34 CHF  | 12 | ZINC     | Noel | 45 |
| 53268 | BOITE OR "Sapins" 21,5X14H2CM                      | 7,53 CHF  | 24 | 9,04 CHF  | 12 | ZINC     | Noel | 45 |

# Catalogue spécial Noël 2026



46

|         |  |           |    |           |    |  |        |      |    |
|---------|--|-----------|----|-----------|----|--|--------|------|----|
| 1100388 | MARKET ROUGE MAISON AVEC CORDE 20X14X14CM            | 3,89 CHF  | 40 |           |    |  | CARTON | Noel | 46 |
| 1100389 | MARKET ROUGE MAISON AVEC CORDE 20X20X18CM            | 5,01 CHF  | 40 |           |    |  | CARTON | Noel | 46 |
| 1100390 | MARKET ROUGE MAISON AVEC CORDE 23X23X26CM            | 5,74 CHF  | 40 |           |    |  | CARTON | Noel | 46 |
| 1100391 | MARKET ROUGE MAISON AVEC CORDE 24,5X24,5X15CM        | 5,40 CHF  | 40 |           |    |  | CARTON | Noel | 46 |
| 22704   | BONBONNIERE GLAND VERT FONCE BI-MATIERE N°1 D7H12CM  | 8,37 CHF  | 12 | 10,05 CHF | 6  |  | VERRE  | Noel | 46 |
| 22705   | BONBONNIERE GLAND VERT FONCE BI-MATIERE N°2 D11H15CM | 11,17 CHF | 8  | 13,41 CHF | 4  |  | VERRE  | Noel | 46 |
| 22706   | BONBONNIERE GLAND ROUGE BI-MATIERE N°1 D7H12CM       | 8,37 CHF  | 12 | 10,05 CHF | 6  |  | VERRE  | Noel | 46 |
| 22707   | BONBONNIERE GLAND ROUGE BI-MATIERE N°2 D11H15CM      | 11,17 CHF | 8  | 13,41 CHF | 4  |  | VERRE  | Noel | 46 |
| 32215   | SAC HOUX 4ASS 18X8H23CM                              | 2,02 CHF  | 96 | 2,41 CHF  | 48 |  | CARTON | Noel | 46 |
| 33935   | PLANCHETTE BONNET/SAPIN 2ASS 9,5X9,5CM +POIGNÉE      | 2,49 CHF  | 48 | 3,00 CHF  | 24 |  | BAMBOU | Noel | 46 |
| 71701   | ROULEAU PAPIER SAPINS "Merry Christmas" 57CMX50M     | 55,97 CHF | 1  |           |    |  | PP     | Noel | 46 |

# Catalogue spécial Noël 2026



13550 | 3ASS  
D4H4,5CM

33973 | D8,5H4/10X8H3,6/26,5X11CM

14106 | H7CM +TIGE

31972 | 2ASS 12X12H3CM  
+12 CHOCOLATS

35050 | 2ASS D9H9,5CM

33931 | 8X8H3,5/19X9,5CM

52716 | 22X9,5H6,3CM

33885 | 3ASS D10H10CM

|       |   |           |     |           |     |               |      |    |
|-------|---|-----------|-----|-----------|-----|---------------|------|----|
| 13550 | CLIP HOUX 3ASS D4H4,5CM                                 | 0,62 CHF  | 288 | 0,73 CHF  | 144 | BOIS          | Noel | 47 |
| 14106 | PIQUET GUI H7CM +TIGE                                   | 0,70 CHF  | 100 | 0,84 CHF  | 50  | FLEUR ARTIFIC | Noel | 47 |
| 31972 | BOITE RIGIDE GUI "Joyeuses Fêtes" 2ASS 12X12H3CM        | 3,89 CHF  | 48  | 4,68 CHF  | 24  | CARTON        | Noel | 47 |
| 33885 | MUG GUI/HOUX ANSE ROUGE 3ASS D10H10CM                   | 6,30 CHF  | 12  | 7,53 CHF  | 6   | PORCELAINE    | Noel | 47 |
| 33931 | 2 CONTENANTS GUI S/PLANCHE BAMBOU 8X8H3,5/19X9,5CM      | 11,17 CHF | 12  | 13,05 CHF | 4   | BAMBOU/PORC   | Noel | 47 |
| 33973 | 3 PLATS MOTIFS NOEL S/PLANCHE D8,5H4/11X8H3,6/26,5X11CM | 17,61 CHF | 6   | 21,14 CHF | 3   | PORCELAINE/B  | Noel | 47 |
| 35050 | MUG BORD SAPIN/GUI INT./ANSE VERT-ROUGE 2ASS D9H9,5CM   | 6,97 CHF  | 12  | 8,37 CHF  | 6   | PORCELAINE    | Noel | 47 |
| 52716 | CAGEOT NATUREL "Ho Ho Ho" 22X9,5H6,3CM                  | 9,21 CHF  | 12  | 11,06 CHF | 6   | BOIS          | Noel | 47 |

# Catalogue spécial Noël 2026



1100370 | 33X25X35CM  
1100386 | 29X20X9CM  
1100375 | 35X26X7CM  
1100376 | 40X30X32CM

Pack découverte  
8 maisons

33969 | 34X24CM  
Voir page 86 pour mesures

Zinc  
19181 | D18H28CM

31862 | 9X6H17CM

Clips  
13564 | 3AS5 2H6CM

33855 | 15,5X7,5H20CM+ANSE

41164  
41448  
41449  
41446  
41447  
41162

|         |   |           |     |           |    |  |              |      |    |
|---------|---|-----------|-----|-----------|----|--|--------------|------|----|
| 1100386 | CHRISTMAS MARKET CORBEILLE 29X21X9CM                  | 3,98 CHF  | 30  |           |    |  | CARTON       | Noel | 48 |
| 1100387 | CHRISTMAS MARKET CORBEILLE 40X30X11,5CM               | 6,50 CHF  | 30  |           |    |  | CARTON       | Noel | 48 |
| 13564   | CLIP CASSE NOISETTE 3AS5 2H6CM                        | 0,76 CHF  | 288 | 0,92 CHF  | 96 |  | BOIS         | Noel | 48 |
| 19181   | BOITE SAPIN DEMONTABLE D18H28CM                       | 20,97 CHF | 8   | 25,17 CHF | 4  |  | ZINC         | Noel | 48 |
| 31852   | BOITE SAPIN "Joyeuses Fêtes" 9X6H17CM                 | 0,81 CHF  | 96  | 0,98 CHF  | 48 |  | CARTON       | Noel | 48 |
| 33855   | SAC SAPIN 15,5X7,5H20CM+ANSE                          | 6,41 CHF  | 12  | 7,70 CHF  | 6  |  | FEUTRINE     | Noel | 48 |
| 33969   | 8X3H11CM PACK DECOUVERTE 8 MAISONS ROUGE/VERT 34X24CM | 8,93 CHF  | 10  | 10,72 CHF | 5  |  | CARTON       | Noel | 48 |
| 41162   | 25MMX18MT RUBAN CARREAUX ROUGE VERT ECRU OR 25MMX18MT | 27,52 CHF | 5   | 33,04 CHF | 2  |  | NON LAITONNE | Noel | 48 |
| 41164   | 25MMX18MT RUBAN CARREAUX VERT ROUGE ECRU OR 25MMX18MT | 27,52 CHF | 5   | 33,04 CHF | 2  |  | NON LAITONNE | Noel | 48 |
| 41446   | 15MMX20MT RUBAN ROUGE SAPINS CRISTAUX OR 15MMX20MT    | 23,52 CHF | 5   | 28,22 CHF | 2  |  | SATIN        | Noel | 48 |
| 41447   | 25MMX20MT RUBAN ROUGE CASSE NOISETTE 25MMX20MT        | 21,67 CHF | 5   | 26,01 CHF | 2  |  | SATIN        | Noel | 48 |
| 41448   | 15MMX20MT RUBAN VERT SAPIN CRISTAUX OR 15MMX20MT      | 23,52 CHF | 5   | 28,22 CHF | 2  |  | SATIN        | Noel | 48 |
| 41449   | 25MMX20MT RUBAN VERT SAPIN CASSE NOISETTE 25MMX20MT   | 21,67 CHF | 5   | 26,01 CHF | 2  |  | SATIN        | Noel | 48 |

# Catalogue spécial Noël 2026



- 1. 53287 | 18X04H3CM
- 2. 53289 | 21,5X04H2CM
- 3. 53290 | 18,6X03,3H6,7CM
- 4. 53288 | 16,5X04H2,7CM
- 5. 33820 | 2ASS H33/45CM

## Fourreau + boule PET

Ø 12cm

## Stickers



35062 | D9H11CM



32267 | D12/15X04H9CM



53332 | 150PCS PN D3,8CM



53291 | 12X4,5H20CM



53292 | 14X5,5H22CM



22746 | D9H12CM



|       |  |           |     |           |    |            |      |    |
|-------|--|-----------|-----|-----------|----|------------|------|----|
| 22746 | VERRE A EAU CASSE-NOISETTE/FEE D9H12CM               | 4,90 CHF  | 12  | 5,85 CHF  | 6  | VERRE      | Noel | 49 |
| 32267 | BOULE PLEXI + FOURREAU CASSE-NOISETTE D12/15X10H19CM | 1,93 CHF  | 100 | 2,32 CHF  | 50 | PET/CARTON | Noel | 49 |
| 33820 | 4 SAPINS ETALAGE ROUGE/VERT +AIMANTS 2ASS H33/45CM   | 36,90 CHF | 2   | 44,24 CHF | 1  | CARTON     | Noel | 49 |
| 35062 | MUG CASSE-NOISETTE ANSE ROUGE D9H11CM                | 7,81 CHF  | 12  | 9,38 CHF  | 6  | PORCELAINE | Noel | 49 |
| 53287 | BOITE BP "Casse Noisette/Fée" 18X14H3CM              | 7,81 CHF  | 24  | 9,38 CHF  | 12 | ZINC       | Noel | 49 |
| 53288 | BOITE BLANCHE "Casse Noisette/Fée"16,5X14H2,7CM      | 6,69 CHF  | 24  | 8,09 CHF  | 12 | ZINC       | Noel | 49 |
| 53289 | BOITE BLANCHE "Casse Noisette/Fée" 21,5X14H2CM       | 7,53 CHF  | 24  | 9,04 CHF  | 12 | ZINC       | Noel | 49 |
| 53290 | BOITE BLANCHE "Casse Noisette/Fée" 18,8X13,3H6,7CM   | 11,17 CHF | 8   |           |    | ZINC       | Noel | 49 |
| 53291 | POCHETTE ZIP "Casse Noisette/Fée"12X4,5H20CM         | 0,81 CHF  | 50  |           |    | ZINC       | Noel | 49 |
| 53292 | POCHETTE ZIP "Casse Noisette/Fée" 14X5,5H22CM        | 0,84 CHF  | 50  |           |    | ZINC       | Noel | 49 |
| 53332 | STICKERS CASSE NOISETTE NP. 150PCS PN D3,8CM         | 16,77 CHF | 1   |           |    | PLASTIQUE  | Noel | 49 |

# Catalogue spécial Noël 2026



|       |   |           |     |           |    |               |      |    |
|-------|---|-----------|-----|-----------|----|---------------|------|----|
| 17163 | PIQUET POMME DE PIN BAIES ROUGES +NOEUD H12CM +TIGE         | 1,26 CHF  | 100 | 1,51 CHF  | 50 | FLEUR ARTIFIC | Noel | 50 |
| 19594 | BOITE PVC N°1 D8,5H12,5CM                                   | 4,45 CHF  | 60  | 5,38 CHF  | 30 | PVC           | Noel | 50 |
| 32070 | BOITE GUI ROUGE 14X12H5CM                                   | 7,81 CHF  | 12  | 9,44 CHF  | 4  | ZINC          | Noel | 50 |
| 33395 | ASSIETTE SAPIN ROUGE TARTAN N°2 PN 30X24H3,5CM              | 11,20 CHF | 8   |           |    | PORCELAINE    | Noel | 50 |
| 33793 | MINI BOTTE ROUGE N°1 6X3,5H6,5CM                            | 1,93 CHF  | 48  | 2,32 CHF  | 24 | PLASTIQUE/FEL | Noel | 50 |
| 33794 | BOTTE ROUGE N°2 10X6H9CM                                    | 3,22 CHF  | 48  | 3,89 CHF  | 12 | PLASTIQUE/TIS | Noel | 50 |
| 33796 | BOTTE ROUGE N°4 14X9H19CM                                   | 8,09 CHF  | 12  | 9,69 CHF  | 4  | PLASTIQUE/TIS | Noel | 50 |
| 33974 | 3 PLATS BLC./ROUGE/NOIR S/PLANCHE 11,5X9H3/12X6H2,5/22X12CM | 13,97 CHF | 6   | 16,77 CHF | 3  | PORCELAINE/B  | Noel | 50 |
| 35086 | CESTO CARREAUX ROUGE/VERT 33X20H7CM                         | 5,85 CHF  | 24  | 7,03 CHF  | 12 | CARTON        | Noel | 50 |
| 35100 | PANIER TEDDY BRUN 19X7,5H14CM                               | 5,29 CHF  | 12  | 6,36 CHF  | 6  | FEUTRINE      | Noel | 50 |
| 35110 | OURS ARROD 2ASS H10CM                                       | 5,29 CHF  | 24  | 6,36 CHF  | 12 | PELUCHE       | Noel | 50 |
| 35111 | OURS ARROD S/LUGE 2ASS 14X5,5H14CM                          | 9,21 CHF  | 12  | 11,06 CHF | 6  | PELUCHE       | Noel | 50 |
| 40191 | 25MMX25MT RUBAN CARREAUX VERT                               | 29,32 CHF | 3   | 35,14 CHF | 1  | NON LAITONNE  | Noel | 50 |
| 41057 | 25MMX25MT RUBAN CARREAUX VERT ROUGE OR 25MMX25MT            | 25,12 CHF | 4   | 30,13 CHF | 2  | LAITONNE      | Noel | 50 |
| 41444 | 15MMX15MT RUBAN CARREAUX VERT ROUGE LIGNE OR 15MMX15MT      | 19,63 CHF | 5   | 23,55 CHF | 2  | NON LAITONNE  | Noel | 50 |
| 41445 | 25MMX15MT RUBAN CARREAUX VERT ROUGE LIGNE OR 25MMX15MT      | 25,37 CHF | 5   | 30,44 CHF | 2  | NON LAITONNE  | Noel | 50 |
| 42130 | RUBAN CARREAUX ROUGE VERT 25MMX25MT                         | 29,32 CHF | 3   | 35,14 CHF | 1  | NON LAITONNE  | Noel | 50 |
| 53327 | STICKERS OURS NP. 150PCS PN D3,8CM                          | 16,77 CHF | 1   |           |    | PLASTIQUE     | Noel | 50 |



# Catalogue spécial Noël 2026



1. 53307 | 14,3X10,3H8,3CM
2. 53305 | 11,5X8,5H2,2CM
3. 53306 | 14,5X14,5H6,5CM
4. 33964 | D20,5H9,5CM
5. 32217 | 4ASS 18X8H23CM

Gnome  
étirable

33858 | 2ASS 12X7H16CM

33859 | 2ASS 15X9H22CM

32086 | 2ASS 6,5X6,5H11CM  
+BTE PET H14X5,5/8CM

18820 | 26H63/90CM

Carton

Livré à plat

1100690 | 20X12H12CM  
1100691 | 31X15H16CM



|         |  |           |    |           |    |  |            |      |    |
|---------|--|-----------|----|-----------|----|--|------------|------|----|
| 1100690 | CAMION ROUGE CORDE 20X12X12CM                                | 2,46 CHF  | 50 |           |    |  | CARTON     | Noel | 52 |
| 1100691 | CAMION ROUGE CORDE 31X15X16CM                                | 3,61 CHF  | 50 |           |    |  | CARTON     | Noel | 52 |
| 18820   | GRAND GNOME GRIS CHAPEAU ROUGE ETIRABLE PN 26H63/90CM        | 28,00 CHF | 1  |           |    |  | PELUCHE    | Noel | 52 |
| 32086   | GOBELET GNOME BLC/ROUGE 2ASS 6,5X6,5H11C+BTE PET H14X5,5/8CM | 1,34 CHF  | 48 | 1,62 CHF  | 24 |  | CARTON/PET | Noel | 52 |
| 32217   | SAC THEME NOEL 4ASS 18X8H23CM                                | 2,02 CHF  | 96 | 2,41 CHF  | 48 |  | CARTON     | Noel | 52 |
| 33858   | CONTENANT GNOME CHAPEAU ETOILE/LIGNE 2ASS N°1 12X7H16CM      | 3,61 CHF  | 12 | 4,34 CHF  | 6  |  | FEUTRINE   | Noel | 52 |
| 33859   | CONTENANT GNOME CHAPEAU ETOILE/LIGNE 2ASS N°2 15X9H22CM      | 7,81 CHF  | 12 | 9,44 CHF  | 6  |  | FEUTRINE   | Noel | 52 |
| 33964   | CALENDRIER DE L'AVENT CERCLE BTES. ROUGE/VERT D20,5H9,5CM    | 22,37 CHF | 10 |           |    |  | CARTON     | Noel | 52 |
| 40185   | 25MMX18MT RUBAN ROUGE GNOMES GRIS                            | 27,52 CHF | 5  | 33,04 CHF | 2  |  | LAITONNE   | Noel | 52 |
| 41116   | 25MMX18MT RUBAN LUTIN  | 27,52 CHF | 5  | 33,04 CHF | 2  |  | LAITONNE   | Noel | 52 |
| 41153   | 25MMX18MT RUBAN VERT CADEAUX 25MMX18MT                       | 27,52 CHF | 5  | 33,04 CHF | 2  |  | LAITONNE   | Noel | 52 |
| 44088   | RUBAN CARREAUX VERT ROUGE 25MMX20MT                          | 27,66 CHF | 3  | 33,21 CHF | 1  |  | LAITONNE   | Noel | 52 |
| 53305   | BOITE PLATE F. BLANCHE "Gnome Noel" 11,5X8,5H2,2CM           | 5,85 CHF  | 50 | 6,97 CHF  | 25 |  | ZINC       | Noel | 52 |
| 53306   | BOITE BOITE FENETRE COTE "Gnome Noel" 14,5X14,5H6,5CM        | 9,21 CHF  | 12 |           |    |  | ZINC       | Noel | 52 |
| 53307   | BOITE ANSE "Gnome Noel" 14,3X10,3H8,3CM                      | 9,49 CHF  | 16 | 10,61 CHF | 8  |  | ZINC       | Noel | 52 |
| 71727   | RUBAN ROUGE GNOMES 25MMX25MT                                 | 19,46 CHF | 4  | 23,35 CHF | 2  |  | SATIN      | Noel | 52 |

# Catalogue spécial Noël 2026



- 1 52751 | 22X9,5H6,3CM
- 2 35070 | D6X8H9CM
- 3 35061 | D9H11CM
- 4 22747 | 2ASS D9H12CM
- 5 35104 | 11X8H14,5CM
- 6 35105 | 13,5X10H18CM
- 7 83218 | +D30H3CM
- 8 32175 | 12X9H9CM BALLOTIN |
- 9 33806 | 2ASS 8H18CM

## Stickers



53324 | 150PCS | 3,8CM

## Feutrine



9



7

8

|       |   |           |    |           |    |            |      |    |
|-------|---|-----------|----|-----------|----|------------|------|----|
| 22747 | VERRE A EAU GNOME D9H12CM 2ASS                                    | 4,90 CHF  | 12 | 5,85 CHF  | 6  | VERRE      | Noel | 53 |
| 32175 | VALISSETTE PET + BOITE ROUGE N°2 "Spécialement pour toi" 12X9H9CM | 1,37 CHF  | 96 | 1,65 CHF  | 48 | PVC        | Noel | 53 |
| 33806 | GNOME ROUGE/GRIS 2ASS 8H18CM                                      | 4,45 CHF  | 24 | 5,32 CHF  | 12 | TISSU      | Noel | 53 |
| 35061 | MUG GNOME ANSE ROUGE D9H11CM                                      | 7,81 CHF  | 12 | 9,38 CHF  | 6  | PORCELAINE | Noel | 53 |
| 35070 | MUG GNOME D6X8H9CM  | 10,92 CHF | 12 | 13,10 CHF | 4  | CERAMIQUE  | Noel | 53 |
| 35104 | BOITE AUX LETTRES PÈRE NOEL N°1 11X8H14,5CM                       | 5,01 CHF  | 12 | 6,02 CHF  | 6  | FEUTRINE   | Noel | 53 |
| 35105 | BOITE AUX LETTRES PÈRE NOEL N°2 13,5X10H18CM                      | 6,16 CHF  | 12 | 7,39 CHF  | 6  | FEUTRINE   | Noel | 53 |
| 52751 | CAGEOT GNOME ROUGE 22X9,5H6,3CM                                   | 7,81 CHF  | 12 | 9,38 CHF  | 6  | BOIS       | Noel | 53 |
| 83218 | RONDIN BOIS +D30H3CM  | 10,61 CHF | 5  |           |    | BOIS       | Noel | 53 |

# Catalogue spécial Noël 2026



54

|       |   |           |     |           |    |               |      |    |
|-------|---|-----------|-----|-----------|----|---------------|------|----|
| 13580 | SKI ROUGE A SUSPENDRE H7CM                                | 0,98 CHF  | 96  | 1,18 CHF  | 48 | BOIS          | Noel | 54 |
| 14113 | PIQUET POMME FEUILLE HOUX H9CM +TIGE                      | 1,40 CHF  | 100 | 1,68 CHF  | 50 | FLEUR ARTIFIC | Noel | 54 |
| 17161 | PIQUET SAPIN POMME DE PIN BAIES ROUGES H10CM +TIGE        | 1,26 CHF  | 100 | 1,51 CHF  | 50 | FLEUR ARTIFIC | Noel | 54 |
| 19207 | BOITE SAPIN FAMILLE NOEL ROUGE 18X14,5H6,5CM              | 4,73 CHF  | 12  | 5,57 CHF  | 6  | ZINC          | Noel | 54 |
| 31745 | BOITE MAISON BORDEAUX 13X8H21CM                           | 1,93 CHF  | 48  | 2,30 CHF  | 24 | CARTON        | Noel | 54 |
| 33557 | MUG GRIS DECO NOEL D8,5H10,5CM                            | 4,73 CHF  | 24  | 5,57 CHF  | 12 | PORCELAINE    | Noel | 54 |
| 33805 | CHAUSSETTE NOEL EN LAINE ROUGE/GRISE 2ASS 12X18CM         | 3,61 CHF  | 24  | 4,34 CHF  | 12 | TISSU         | Noel | 54 |
| 33809 | BONHOMME DE NEIGE DECO H35CM                              | 8,37 CHF  | 6   | 10,05 CHF | 3  | TISSU         | Noel | 54 |
| 33817 | MUG "BONNES FETES" + SS TASSE ROUGES D7,5H8,5CM/20,5X12CM | 8,09 CHF  | 12  | 9,72 CHF  | 6  | PORCELAINE    | Noel | 54 |
| 33861 | CHAUSSETTE NORDIQUE ROUGE/BLANCHE 2ASS N°2 14,5H20CM      | 4,73 CHF  | 24  | 5,57 CHF  | 12 | TISSU         | Noel | 54 |
| 33864 | CONTENANT FEUTRINE BONHOMME DE NEIGE 10X9H13CM            | 6,02 CHF  | 12  | 7,25 CHF  | 6  | FEUTRINE      | Noel | 54 |
| 35032 | CONTENANT CABINE SKI N°1 8X8H7,5CM                        | 5,01 CHF  | 12  | 6,02 CHF  | 4  | BOIS          | Noel | 54 |
| 35033 | CONTENANT CABINE SKI N°2 10,5X10,5H10CM                   | 6,13 CHF  | 12  | 7,36 CHF  | 4  | BOIS          | Noel | 54 |
| 41253 | 25MMX25MT RUBAN BONHOMME DE NEIGE 25MMX25MT               | 36,37 CHF | 3   | 43,65 CHF | 1  | NON LAITONNE  | Noel | 54 |
| 41671 | 25MMX20MT RUBAN BLANC CRISTAUX ROUGE 25MMX20MT            | 21,53 CHF | 5   | 25,84 CHF | 2  | LAITONNE      | Noel | 54 |
| 44586 | RUBAN BONNET NOEL 25MMX25MT                               | 31,75 CHF | 3   | 38,11 CHF | 1  | NON LAITONNE  | Noel | 54 |
| 45092 | RUBAN ROUGE CRISTAUX 15MMX20MT                            | 19,46 CHF | 5   | 23,35 CHF | 2  | NON LAITONNE  | Noel | 54 |
| 45093 | RUBAN ROUGE CRISTAUX 25MMX20MT                            | 20,50 CHF | 5   | 24,58 CHF | 2  | NON LAITONNE  | Noel | 54 |
| 71725 | RUBAN ROUGE SAPINS/HOUX OR 25MMX25MT                      | 16,66 CHF | 4   | 20,02 CHF | 2  | SATIN         | Noel | 54 |

# Catalogue spécial Noël 2026



|       |  |           |    |           |    |            |      |    |
|-------|--|-----------|----|-----------|----|------------|------|----|
| 32256 | CESTO ROUGE BOULES NOEL N°1 23X16H7,5CM                      | 2,77 CHF  | 36 | 3,33 CHF  | 12 | CARTON     | Noel | 55 |
| 32257 | CESTO ROUGE BOULES NOEL N°2 33X20H7,5CM                      | 4,17 CHF  | 36 | 5,01 CHF  | 12 | CARTON     | Noel | 55 |
| 33852 | SAC MAISONNETTE ROUGE NOEL 18,5X8X18CM+ANSE                  | 7,70 CHF  | 12 | 9,21 CHF  | 6  | FEUTRINE   | Noel | 55 |
| 35046 | MUG "Vive l'hiver" CABINES DE SKI D10H9CM                    | 7,25 CHF  | 12 | 8,65 CHF  | 6  | PORCELAINE | Noel | 55 |
| 53310 | BOITE ROUGE "Journée au ski" 12,3X9,3H4CM                    | 6,13 CHF  | 24 | 7,34 CHF  | 12 | ZINC       | Noel | 55 |
| 53311 | "BOITE PLATE BLANCHE GLISSIERE "Journée au ski" 10,5X7H2,8CM | 4,73 CHF  | 48 | 5,57 CHF  | 24 | ZINC       | Noel | 55 |
| 53312 | BOITE BLANCHE NOEUD "Journée au ski" 21,5X14H2CM             | 7,53 CHF  | 24 | 9,04 CHF  | 12 | ZINC       | Noel | 55 |
| 53313 | BOITE PLATE BLC. FTE PVC "Journée au ski" 23X18,5H2,3CM      | 10,05 CHF | 16 | 12,01 CHF | 8  | ZINC       | Noel | 55 |

# Catalogue spécial Noël 2026



|       |  |           |    |           |    |            |      |    |
|-------|--|-----------|----|-----------|----|------------|------|----|
| 19186 | SEAU ROUGE ANSE D9H11CM +ANSE  | 4,73 CHF  | 12 | 5,68 CHF  | 4  | ZINC       | Noel | 56 |
| 31898 | BOITE RIGIDE KRAFT VOITURE/SAPIN "Joyeuses Fêtes" 2ASS 17X7,5H3CM    | 3,89 CHF  | 48 | 4,68 CHF  | 24 | CARTON     | Noel | 56 |
| 31912 | TOUR SAPIN +24 BTES GNOME ROUGE/RENNE VERT 2ASS 4X4H4/12,5X12,5H30CM | 12,01 CHF | 4  | 14,42 CHF | 2  | CARTON     | Noel | 56 |
| 31991 | BOITE LOLLIPOP 20,5X14H5CM   | 7,53 CHF  | 24 | 9,04 CHF  | 12 | CARTON     | Noel | 56 |
| 33442 | CERF DECO PULL ROUGE N°1 15X13H48CM                                  | 28,00 CHF | 2  |           |    | PELUCHE    | Noel | 56 |
| 33672 | TASSE ELAN NOEL D9,5H5,5CM   | 5,57 CHF  | 8  | 6,69 CHF  | 4  | PORCELAINE | Noel | 56 |
| 33674 | TEA FOR ONE ELAN NOEL 15X10H13CM                                     | 10,33 CHF | 4  | 12,40 CHF | 2  | PORCELAINE | Noel | 56 |
| 33865 | SAC LOLLIPOP N°1 18X7H9,5CM+ANSE                                     | 3,89 CHF  | 12 | 4,68 CHF  | 6  | FEUTRINE   | Noel | 56 |
| 33866 | SAC LOLLIPOP N°2 22,5X8,5H11,5CM+ANSE                                | 5,18 CHF  | 12 | 6,22 CHF  | 6  | FEUTRINE   | Noel | 56 |
| 35106 | BOITE CADEAU NOEUD ROUGE N°1 12X12H11CM                              | 6,58 CHF  | 12 | 7,81 CHF  | 6  | FEUTRINE   | Noel | 56 |
| 35107 | BOITE CADEAU NOEUD ROUGE N°2 15X15H13CM                              | 7,81 CHF  | 8  | 9,38 CHF  | 4  | FEUTRINE   | Noel | 56 |
| 40621 | 25MMX15MT RUBAN ROUGE ELAN   | 20,50 CHF | 5  | 24,58 CHF | 2  | LAITONNE   | Noel | 56 |
| 41439 | 10MMX20MT RUBAN VERT SAPIN 10MMX20MT                                 | 15,43 CHF | 5  | 18,51 CHF | 2  | VOILE      | Noel | 56 |
| 41440 | 25MMX20MT RUBAN VERT SAPIN 25MMX20MT                                 | 22,23 CHF | 5  | 26,68 CHF | 2  | VOILE      | Noel | 56 |
| 41441 | 10MMX20MT RUBAN ROUGE SAPIN 10MMX20MT                                | 15,43 CHF | 5  | 18,51 CHF | 2  | VOILE      | Noel | 56 |
| 41442 | 25MMX20MT RUBAN ROUGE SAPIN 25MMX20MT                                | 22,23 CHF | 5  | 26,68 CHF | 2  | VOILE      | Noel | 56 |

# Catalogue spécial Noël 2026



- 1 35045 | D8H10CM
- 2 53281 | 13,2X13,2H4,5CM
- 3 53283 | 14,3X10,3H8,3CM
- 4 53280 | 12,8X9,4H4,2CM
- 5 53282 | 18,8X13,3H6,7CM



3514 | 12X8H18CM



Bois

35039 | 18,5X9H6,5/13CM



57

|       |   |           |    |           |    |            |      |    |
|-------|---|-----------|----|-----------|----|------------|------|----|
| 35039 | CAGEOT MAISON GNOME 18,5X9H6,5/13CM               | 6,13 CHF  | 12 | 7,36 CHF  | 4  | BOIS       | Noel | 57 |
| 35045 | MUG FAMILLE SOURIS D8H10CM                        | 7,53 CHF  | 12 | 9,21 CHF  | 6  | PORCELAINE | Noel | 57 |
| 35114 | CONTENANT BOITE AUX LETTRES BLC. SANTA 12X8H18CM  | 5,46 CHF  | 12 | 6,58 CHF  | 6  | FEUTRINE   | Noel | 57 |
| 53280 | BOITE BLANCHE "Barnaby la souris" 12,8X9,4H4,2CM  | 6,13 CHF  | 24 | 7,34 CHF  | 12 | ZINC       | Noel | 57 |
| 53281 | BOITE BLANCHE "Barnaby la souris" 13,2X13,2H4,5CM | 7,25 CHF  | 24 | 8,65 CHF  | 12 | ZINC       | Noel | 57 |
| 53282 | BOITE BLANCHE "Barnaby la souris" 18,8X13,3H6,7CM | 11,17 CHF | 8  |           |    | ZINC       | Noel | 57 |
| 53283 | BOITE ANSE "Barnaby la souris" 14,3X10,3H8,3CM    | 9,49 CHF  | 16 | 10,61 CHF | 8  | ZINC       | Noel | 57 |

# Catalogue spécial Noël 2026



Métal

32073 | 4ASS D9H15CM



33785 | 3ASS D8,5H9,5CM



31663 | 2ASS 9X8,5H10CM



19546 | D10H13CM

19547 | D12,5H15,5CM



19208 | 2ASS 13X7,5H9,5CM



33884 | 4ASS D8,5H10,5CM

|       |   |          |    |          |    |            |      |    |
|-------|---|----------|----|----------|----|------------|------|----|
| 19208 | BOITE AUX LETTRES NOEL 2ASS 13X7,5H9,5CM              | 5,57 CHF | 12 | 6,69 CHF | 6  | ZINC       | Noel | 58 |
| 19546 | BOITE PVC CHAUSSETTES DE NOEL D10H13CM                | 4,45 CHF | 24 | 5,32 CHF | 12 | PVC        | Noel | 58 |
| 19547 | BOITE PVC BONHOMME DE NEIGE D12,5H15,5CM              | 5,57 CHF | 24 | 6,69 CHF | 12 | PVC        | Noel | 58 |
| 31663 | BOITE PVC BONH. DE NEIGE ET PÈRE NOEL 2ASS 9X8,5H10CM | 1,54 CHF | 48 | 1,85 CHF | 24 | PET        | Noel | 58 |
| 32073 | BOITE NOEL + BONNET 4ASS D9H15CM                      | 5,57 CHF | 24 | 6,69 CHF | 12 | ZINC       | Noel | 58 |
| 33785 | MUG FAMILLE NOËL ANSE ROUGE 3ASS D8,5H9,5CM           | 6,86 CHF | 12 | 8,26 CHF | 6  | PORCELAINE | Noel | 58 |
| 33884 | MUG THEME NOEL ROUGE/VERT 4ASS D8,5H10,5CM            | 5,29 CHF | 16 | 6,36 CHF | 8  | PORCELAINE | Noel | 58 |

# Catalogue spécial Noël 2026



24615 | D14H3,5CM



24613 | D10H7,5CM



31971 | 2ASS 12X12H3CM



35101 | 13X8H18,5CM



1. 35068 | D7X10H9CM
2. 33853 | 14,5X10X3CM+ANSE
3. 33854 | 20,5X7,5H18CM+ANSE
4. 35102 | D12H10CM +POCHON
5. 31970 | 4ASS 18X8H23CM

|       |   |           |    |           |    |            |      |    |
|-------|---|-----------|----|-----------|----|------------|------|----|
| 24613 | TASSE ROUCHINETTE ROUGE D10H7,5CM                 | 7,53 CHF  | 12 | 9,04 CHF  | 4  | PORCELAINE | Noel | 59 |
| 24615 | ASSIETTE RONDE ROUCHINETTE ROUGE D14H3,5CM        | 5,01 CHF  | 8  | 6,02 CHF  | 4  | PORCELAINE | Noel | 59 |
| 31970 | SAC HO HO HO NOEL 4ASS 18X8H23CM                  | 2,02 CHF  | 96 | 2,41 CHF  | 48 | CARTON     | Noel | 59 |
| 31971 | BOITE RIDIGE THEME NOEL ROUGE/GRIS 2ASS 12X12H3CM | 3,89 CHF  | 48 | 4,68 CHF  | 24 | CARTON     | Noel | 59 |
| 31994 | BOITE SUCRE D'ORGE ROUGE BRILLANTE 30X19,5H7CM    | 15,65 CHF | 12 | 18,73 CHF | 6  | CARTON     | Noel | 59 |
| 33853 | SAC BICHE BONNET ROUGE N°1 14,5X6X13CM+ANSE       | 5,46 CHF  | 12 | 6,58 CHF  | 6  | FEUTRINE   | Noel | 59 |
| 33854 | SAC BICHE BONNET ROUGE N°2 20,5X7,5H18+ANSE       | 7,81 CHF  | 12 | 9,44 CHF  | 6  | FEUTRINE   | Noel | 59 |
| 35068 | MUG RENNE D7X10H9CM                               | 10,92 CHF | 12 | 13,10 CHF | 4  | CERAMIQUE  | Noel | 59 |
| 35087 | CESTO PLAISIR/JOIE/BONHEUR 24X14H7CM              | 4,73 CHF  | 24 | 5,57 CHF  | 12 | CARTON     | Noel | 59 |
| 35101 | CONTENANT CADEAU FENETRE 13X8H18,5CM              | 5,29 CHF  | 12 | 6,36 CHF  | 6  | FEUTRINE   | Noel | 59 |
| 35102 | POCHON RENNE VELOURS ROUGE D12H10CM +POCHON       | 6,30 CHF  | 12 | 7,53 CHF  | 6  | FEUTRINE   | Noel | 59 |

# Catalogue spécial Noël 2026



|       |   |           |    |           |    |              |      |    |
|-------|---|-----------|----|-----------|----|--------------|------|----|
| 19010 | PANIER CARRE GRIS FONCE 19X19H9CM             | 3,33 CHF  | 48 | 4,00 CHF  | 24 | POLYESTER    | Noel | 60 |
| 19011 | PANIER RECT. GRIS FONCE N°1 22X14H7CM         | 2,49 CHF  | 48 | 3,00 CHF  | 24 | POLYESTER    | Noel | 60 |
| 19012 | PANIER RECT. GRIS FONCE N°2 26X18H6CM         | 3,22 CHF  | 48 | 3,89 CHF  | 24 | POLYESTER    | Noel | 60 |
| 19013 | PANIER RECT. GRIS FONCE N°3 34X28H8CM         | 5,18 CHF  | 24 | 6,22 CHF  | 12 | POLYESTER    | Noel | 60 |
| 19015 | PANIER CARRE VERT FONCE 19X19H9CM             | 3,05 CHF  | 48 | 3,64 CHF  | 24 | POLYESTER    | Noel | 60 |
| 24610 | TASSE ROUCHINETTE GRIS D10H7,5CM              | 7,53 CHF  | 12 | 9,04 CHF  | 4  | PORCELAINE   | Noel | 60 |
| 24611 | ASSIETTE ROUCHINETTE GRIS 12X12H2CM           | 4,06 CHF  | 12 | 4,93 CHF  | 6  | PORCELAINE   | Noel | 60 |
| 24612 | ASSIETTE RONDE ROUCHINETTE GRIS D14H3,5CM     | 5,01 CHF  | 8  | 6,02 CHF  | 4  | PORCELAINE   | Noel | 60 |
| 24826 | MUG CHATS/CHIENS LA COMPAGNIE 2ASS D9H9CM     | 5,57 CHF  | 12 | 6,69 CHF  | 6  | PORCELAINE   | Noel | 60 |
| 24915 | TASSE CHATS + SS PLAT D5,5H6/20X7,5CM         | 11,17 CHF | 12 | 13,41 CHF | 6  | PORCELAINE   | Noel | 60 |
| 24935 | TASSE CHAT COMIQUE ANSE NOIRE 4ASS D9H8,5CM   | 6,41 CHF  | 24 | 7,70 CHF  | 12 | PORCELAINE   | Noel | 60 |
| 33682 | TASSE CHADAMOUR SS-TASSE ROUGE D9/13,5H8CM    | 9,52 CHF  | 12 | 11,42 CHF | 4  | PORCELAINE   | Noel | 60 |
| 33685 | GRANDE CUILLERE CHADAMOURL 24X10H2CM          | 5,57 CHF  | 12 | 6,69 CHF  | 4  | PORCELAINE   | Noel | 60 |
| 41261 | 25MMX25MT RUBAN CARREAUX ROUGE OR 25MMX25MT   | 29,20 CHF | 3  | 35,06 CHF | 1  | NON LAITONNE | Noel | 60 |
| 41465 | 25MMX20MT RUBAN BORDEAUX ETOILES OR 25MMX20MT | 23,83 CHF | 5  | 28,59 CHF | 2  | NON LAITONNE | Noel | 60 |
| 42018 | RUBAN ROUGE MARTELE 25MMX20MT                 | 14,34 CHF | 5  | 17,22 CHF | 2  | NON LAITONNE | Noel | 60 |

# Catalogue spécial Noël 2026



- |                                 |                                  |
|---------------------------------|----------------------------------|
| 1. 53314   2ASS 11,5X8,5H2,2CM  | 5. 33820   2ASS H33/45CM         |
| 2. 53308   2ASS D10,5H5CM       | 6. 33651   2ASS 10X25H14CM +ANSE |
| 3. 53309   2ASS 18,8X13,3H6,7CM | 7. 33652   2ASS 14X4H27CM        |
| 4. 32218   2ASS 18X8H23CM       |                                  |

## Stickers



53329 | 2ASS 150PCS D3,8CM



## Feutrine



35047 | 2ASS D10X9CM

|       |   |           |    |           |    |            |      |    |
|-------|---|-----------|----|-----------|----|------------|------|----|
| 32218 | SAC CHATONS NOEL 2ASS 18X8H23CM                     | 2,02 CHF  | 96 | 2,41 CHF  | 48 | CARTON     | Noel | 61 |
| 33651 | SAC CHADAMOUR BONNET ROUGE 2ASS 10X7,5H14CM +ANSE   | 6,41 CHF  | 24 | 7,70 CHF  | 12 | FEUTRINE   | Noel | 61 |
| 33652 | PRESENTOIR CHADAMOUR BONNET ROUGE 2ASS 14X4H27CM    | 8,37 CHF  | 12 | 10,05 CHF | 4  | FEUTRINE   | Noel | 61 |
| 33820 | 4 SAPINS ETALAGE ROUGE/VERT +AIMANTS 2ASS H33/45CM  | 36,90 CHF | 2  | 44,24 CHF | 1  | CARTON     | Noel | 61 |
| 35047 | MUG CHATONS BONNET NOEL 2ASS D10H9CM                | 7,25 CHF  | 12 | 8,65 CHF  | 6  | PORCELAINE | Noel | 61 |
| 53308 | BOITE RONDE "Chaton Noel" D10,5H5CM                 | 5,57 CHF  | 24 | 6,30 CHF  | 12 | ZINC       | Noel | 61 |
| 53309 | BOITE BLANCHE "Chaton Noel" 18,8X13,3H6,7CM         | 11,17 CHF | 8  |           |    | ZINC       | Noel | 61 |
| 53314 | BOITE PLATE F. BLANCHE "Chaton Noel" 11,5X8,5H2,2CM | 5,85 CHF  | 50 | 6,97 CHF  | 25 | ZINC       | Noel | 61 |
| 53329 | STICKERS CHAT 2ASS NP. 150PCS PN D3,8CM             | 16,77 CHF | 1  |           |    | PLASTIQUE  | Noel | 61 |

# Catalogue spécial Noël 2026



62

|         |  |           |    |           |    |            |      |    |
|---------|--|-----------|----|-----------|----|------------|------|----|
| 1197813 | BLANC MAISON SAPIN AVEC CORDE 20X14X14CM     | 3,89 CHF  | 40 |           |    | CARTON     | Noel | 62 |
| 1197814 | BLANC MAISON SAPIN AVEC CORDE 20X20X18CM     | 5,01 CHF  | 40 |           |    | CARTON     | Noel | 62 |
| 1197816 | BLANC MAISON SAPIN AVEC CORDE 24,5X24,5X15CM | 6,13 CHF  | 20 |           |    | CARTON     | Noel | 62 |
| 19545   | SAC PVC MOTIFS SAPIN ANSES ROUGES 20X7H25CM  | 2,10 CHF  | 96 | 2,49 CHF  | 48 | PVC        | Noel | 62 |
| 22749   | VERRE A EAU GUIRLANDE BOULES D9H12CM         | 5,01 CHF  | 12 | 6,02 CHF  | 6  | VERRE      | Noel | 62 |
| 22750   | VERRE A VIN GUIRLANDE BOULES D8H22CM         | 12,57 CHF | 12 | 15,09 CHF | 6  | VERRE      | Noel | 62 |
| 35056   | GOBELET BOULES/SAPINS D8,5H13CM              | 6,97 CHF  | 12 | 8,37 CHF  | 6  | PORCELAINE | Noel | 62 |
| 53336   | CAGEOT "Boules" 22X9,5H6,3CM                 | 7,81 CHF  | 12 | 9,38 CHF  | 6  | BOIS       | Noel | 62 |
| 53337   | CAGEOT RECT. NATUREL "Boules" 45X7,5H6CM     | 11,48 CHF | 24 | 14,28 CHF | 12 | BOIS       | Noel | 62 |
| 53338   | BOITE RONDE "Boules" D11H4,5CM               | 4,17 CHF  | 8  |           |    | BOIS       | Noel | 62 |
| 53339   | BOITE OVALE "Boules" 25,5X12,5H8CM           | 9,66 CHF  | 2  |           |    | BOIS       | Noel | 62 |

# Catalogue spécial Noël 2026



35121 | 6ASS 8X6H4CM



35120 | 6ASS 6,5X5,5H6CM



35119 | 6ASS 8X6H5CM



35118 | 4ASS 6X6H12CM



32076 | 12ASS D7H5CM



35117 | 6ASS  
8,5X4H10,5CM



32075 | 10ASS 11,5X6,5H4CM

|       |   |          |    |          |    |      |      |    |
|-------|---|----------|----|----------|----|------|------|----|
| 32075 | BOITE RECT. THEME NOEL 10ASS 11,5X6,5H4CM | 3,89 CHF | 40 | 4,68 CHF | 20 | ZINC | Noel | 63 |
| 32076 | BOITE RONDE THEME NOEL 12ASS D7H5CM       | 3,05 CHF | 48 | 3,67 CHF | 24 | ZINC | Noel | 63 |
| 35117 | BOITE MAISON THEME NOEL 6ASS 8,5X4H10,5CM | 4,90 CHF | 48 | 5,85 CHF | 24 | ZINC | Noel | 63 |
| 35118 | BOITE MAISON DROITE 4ASS 6X6H12CM         | 6,41 CHF | 24 | 7,70 CHF | 12 | ZINC | Noel | 63 |
| 35119 | BOITE SAPIN 6ASS 8X5H9CM                  | 5,18 CHF | 24 | 6,22 CHF | 12 | ZINC | Noel | 63 |
| 35120 | BOITE CADEAU CARRE 6ASS 6,5X5,5H6CM       | 3,89 CHF | 48 | 4,68 CHF | 24 | ZINC | Noel | 63 |
| 35121 | BOITE CADEAU 6ASS 8X6H4CM                 | 4,17 CHF | 48 | 5,01 CHF | 24 | ZINC | Noel | 63 |

# Catalogue spécial Noël 2026



|         |   |           |    |           |    |  |           |      |    |
|---------|---|-----------|----|-----------|----|--|-----------|------|----|
| 1100690 | CAMION ROUGE CORDE 20X12X12CM                       | 2,46 CHF  | 50 |           |    |  | CARTON    | Noel | 64 |
| 1100691 | CAMION ROUGE CORDE 31X15X16CM                       | 3,61 CHF  | 50 |           |    |  | CARTON    | Noel | 64 |
| 32072   | BOITE BUS THEME NOEL 19X7H15,5CM                    | 9,38 CHF  | 12 | 11,17 CHF | 6  |  | ZINC      | Noel | 64 |
| 32210   | SAC CADEAUX VERT/ROUGE 2ASS 18X8H23CM               | 1,65 CHF  | 96 | 1,99 CHF  | 48 |  | CARTON    | Noel | 64 |
| 32211   | BOITE RIGIDE CADEAUX VERT/ROUGE 2ASS 17X7,5H3CM     | 3,89 CHF  | 48 | 4,68 CHF  | 24 |  | CARTON    | Noel | 64 |
| 32212   | SAC CADEAUX CARREAUX/FLOCONS ROUGES 2ASS 26X10H32CM | 2,30 CHF  | 48 | 2,74 CHF  | 24 |  | CARTON    | Noel | 64 |
| 32213   | BOITE RIGIDE CARREAUX/FLOCONS ROUGES 2ASS 12X12H3CM | 3,89 CHF  | 48 | 4,68 CHF  | 24 |  | CARTON    | Noel | 64 |
| 33606   | BOITE CAMION NOEL 2ASS 19X6H11CM                    | 9,21 CHF  | 12 | 11,06 CHF | 6  |  | ZINC      | Noel | 64 |
| 33808   | PELUCHE ETALAGE LUTIN ROUGE/VERT 2ASS H51/74CM      | 27,97 CHF | 4  | 33,57 CHF | 2  |  | TISSU     | Noel | 64 |
| 52218   | POCHETTE ZIP LUTIN "Ho-Ho-Ho" N°2 12X4,5H20CM       | 0,81 CHF  | 50 |           |    |  | ZINC      | Noel | 64 |
| 52219   | POCHETTE ZIP LUTIN "Ho-Ho-Ho" N°3 14X5,5H22CM       | 0,84 CHF  | 50 |           |    |  | KRAFT     | Noel | 64 |
| 52763   | CAGEOT LUTINS 22X9,5H6,3CM                          | 7,81 CHF  | 12 | 9,38 CHF  | 6  |  | BOIS      | Noel | 64 |
| 52766   | STICKERS ALERTE LUTINS NP. 150PCS PN 3,8X3,8CM      | 16,77 CHF | 1  |           |    |  | PLASTIQUE | Noel | 64 |

**Catalogue spécial Noël 2026**



33760 | D8H10,5CM



33888 | D9,5H9CM

**Camion**  
1241773 | 101X56X63CM



33943 | D10,5H6/22X11CM



31837 | 30X12H9CM

31836 | 26X10H32CM



19221 | 22X16H12CM

|         |   |            |    |           |    |             |      |    |
|---------|---|------------|----|-----------|----|-------------|------|----|
| 1241773 | CAMION BLANC OR 101X56X63CM                   | 395,00 CHF | 1  |           |    | ZINC        | Noel | 65 |
| 19221   | PANIER LUTIN ANSES ROUGES 22X16H12CM          | 13,97 CHF  | 8  | 16,77 CHF | 4  | ZINC        | Noel | 65 |
| 31836   | SAC LUTINS ROUGE N°2 26X10H32CM               | 2,77 CHF   | 48 | 3,33 CHF  | 24 | CARTON      | Noel | 65 |
| 31837   | SAC LUTINS ROUGE N°3 30X12H9CM                | 3,61 CHF   | 48 | 4,34 CHF  | 24 | CARTON      | Noel | 65 |
| 33760   | MUG CHAUSSETTES LUTIN VERT D8H10,5CM          | 4,73 CHF   | 12 | 5,57 CHF  | 6  | PORCELAINE  | Noel | 65 |
| 33888   | MUG LUTIN GOURMANDISE D9,5H9CM                | 4,54 CHF   | 12 | 5,46 CHF  | 6  | PORCELAINE  | Noel | 65 |
| 33943   | 2 BOLS LUTIN S/PLANCHE BAMBOU D10,5H6/22X11CM | 15,65 CHF  | 8  | 18,73 CHF | 4  | BAMBOU/PORC | Noel | 65 |
| 71847   | RUBAN BOTTES DE LUTINS 15MMX25MT              | 12,60 CHF  | 4  | 15,12 CHF | 2  | SATIN       | Noel | 65 |
| 71848   | RUBAN BOTTES DE LUTINS 25MMX25MT              | 19,46 CHF  | 4  | 23,35 CHF | 2  | SATIN       | Noel | 65 |

# Catalogue spécial Noël 2026



Fourreau  
+ boule PET



32263 | D12/15X10H19CM

- 1. 53296 | 21,5X14H2CM
- 2. 53295 | 12,3X9,3H4CM
- 3. 33897 | D8H9,5CM
- 4. 32090 | CORNET H30C1  
H14X5,5/8CM



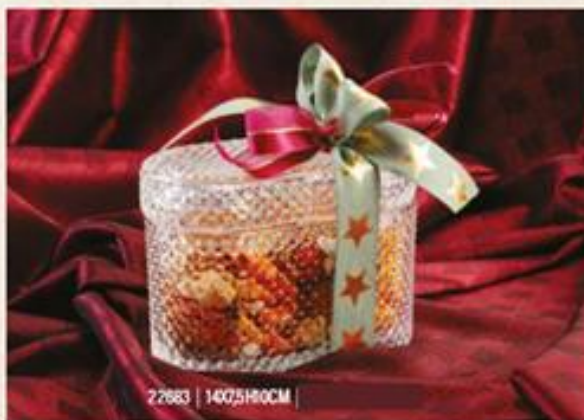
Bord doré

22690 | 12X10,5H5CM

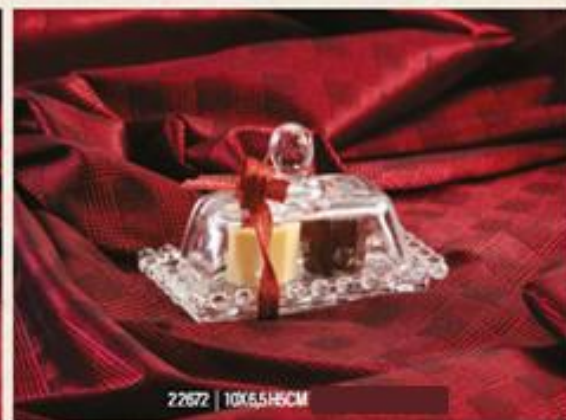


34405 | 14X9H6CM

34404 | 12X7H6CM



22683 | 14X7,5H10CM



22672 | 10X5,5H6CM

66

|       |  |          |     |          |    |            |      |    |
|-------|--|----------|-----|----------|----|------------|------|----|
| 22672 | BEURRIER EN VERRE 10X6,5H5CM                             | 4,62 CHF | 48  | 5,54 CHF | 12 | VERRE      | Noel | 66 |
| 22683 | BONBONNIERE OVALE TRANSPARENTE 14X7,5H10CM               | 7,81 CHF | 12  | 9,38 CHF | 4  | VERRE      | Noel | 66 |
| 22690 | CONTENANT COEUR TRANSPARENT BORD OR 12X10,5H5CM          | 3,33 CHF | 24  | 4,00 CHF | 6  | VERRE      | Noel | 66 |
| 32090 | CORNET FLOCON OR/BLANC 2ASS H30CM +BOITE PET H14X5,5/8CM | 1,93 CHF | 48  | 2,32 CHF | 24 | CARTON/PET | Noel | 66 |
| 32263 | BOULE PLEXI + FOURREAU BOULES NOEL D12/15X10H19CM        | 1,93 CHF | 100 | 2,32 CHF | 50 | PET/CARTON | Noel | 66 |
| 33897 | MUG DROIT RENNE "Plaisir d'Hiver" OR D8H9,5CM            | 6,69 CHF | 12  | 8,04 CHF | 6  | PORCELAINE | Noel | 66 |
| 34404 | CONTENANT DEMI OEUF + OREILLES N°1 12X7H6CM              | 4,17 CHF | 24  | 5,01 CHF | 12 | VERRE      | Noel | 66 |
| 34405 | CONTENANT DEMI OEUF + OREILLES N°2 14X9H9CM              | 7,42 CHF | 18  | 8,90 CHF | 6  | VERRE      | Noel | 66 |
| 53295 | BOITE OR "Boule Noel noir/or" 12,3X9,3H4CM               | 6,13 CHF | 24  | 7,34 CHF | 12 | ZINC       | Noel | 66 |
| 53296 | BOITE OR "Boule Noel noir/or" 21,5X14H2CM                | 7,53 CHF | 24  | 9,04 CHF | 12 | ZINC       | Noel | 66 |

# Catalogue spécial Noël 2026



22718 | D11H14,5CM

22717 | D11H13CM



19962 | D11H5CM

19982 | D11H5CM

## Stickers



53328 | 150PCS PN D3,8CM



- 1. 53301
- 2. 53302
- 3. 53303
- 4. 53304

## Cesto

- 1. 32282 | 25,5X15,5X8CM
- 2. 32283 | 36X25,5X8CM
- 3. 32280 | 2 BOUTEILLES  
34X18,5X9CM
- 4. 32281 | 3 BOUTEILLES  
34X28X9CM



74

|       |   |           |    |           |    |           |      |    |
|-------|---|-----------|----|-----------|----|-----------|------|----|
| 19962 | BOITE BOMBEE "La Vie est Belle" BLC. D11H5CM                  | 5,57 CHF  | 24 | 6,69 CHF  | 12 | ZINC      | Noel | 74 |
| 19982 | BOITE BOMBEE "La Vie est Belle" NOIRE D11H5CM                 | 5,57 CHF  | 24 | 6,69 CHF  | 12 | ZINC      | Noel | 74 |
| 22717 | BONBONNIERE BOULE BLC. STRASS N°2 D11H13CM                    | 12,01 CHF | 8  | 14,42 CHF | 4  | VERRE     | Noel | 74 |
| 22718 | BONBONNIERE BOULE BLC. STRASS N°3 D13H14,5CM                  | 14,81 CHF | 6  | 17,78 CHF | 3  | VERRE     | Noel | 74 |
| 32280 | BOITE 2 BOUTEILLES CANTINETTA NOIRE BOULES BRONZE 34X18,5X9CM | 4,17 CHF  | 30 |           |    | CARTON    | Noel | 74 |
| 32281 | BOITE 3 BOUTEILLES CANTINETTA NOIRE BOULES BRONZE 34X28X9CM   | 5,57 CHF  | 30 |           |    | CARTON    | Noel | 74 |
| 32282 | CORBEILLE NOIR BOULES BRONZE 25,5X15,5X8CM                    | 1,82 CHF  | 50 |           |    | CARTON    | Noel | 74 |
| 32283 | CORBEILLE NOIR BOULES BRONZE 36X25,5X8CM                      | 2,66 CHF  | 50 |           |    | CARTON    | Noel | 74 |
| 53301 | BOITE NOIR "Boules de Noel" 12,7X9,3H4,3CM                    | 6,13 CHF  | 27 | 7,34 CHF  | 9  | ZINC      | Noel | 74 |
| 53302 | BOITE CARREE NOIRE "Boules de Noel" 13,2X13,2H4,5CM           | 7,25 CHF  | 24 | 8,65 CHF  | 12 | ZINC      | Noel | 74 |
| 53303 | BOITE RONDE NOIRE "Boules de Noel" D14,6H7CM                  | 7,25 CHF  | 24 | 8,65 CHF  | 12 | ZINC      | Noel | 74 |
| 53304 | BOITE NOIRE "Boules de Noel" 18,8X13,3H6,7CM                  | 11,17 CHF | 8  |           |    | ZINC      | Noel | 74 |
| 53328 | STICKERS BOULES NP. 150PCS PN D3,8CM                          | 16,77 CHF | 1  |           |    | PLASTIQUE | Noel | 74 |

# Catalogue spécial Noël 2026



Boîte + glissière

Fourreau  
+ boule PET



32268 | D12/15X10H19CM



32243 | 17X7,5H3CM



24941 | 4ASS D9H9CM

75

|       |   |          |     |          |    |            |      |    |
|-------|---|----------|-----|----------|----|------------|------|----|
| 24941 | MUG NOIR MAT "LOVE/HOME" DORE 4ASS D9H9CM           | 7,81 CHF | 24  | 9,38 CHF | 12 | PORCELAINE | Noel | 75 |
| 32051 | BOITE RECT. CHOCOLAT FNT. NOIRE 25X13,7H1,8CM       | 1,93 CHF | 100 | 2,32 CHF | 50 | CARTON     | Noel | 75 |
| 32240 | MINI BOITE BOULES BRONZE 5X5H5CM                    | 0,81 CHF | 96  | 0,98 CHF | 48 | CARTON     | Noel | 75 |
| 32241 | SAC FNT. BOULES BRONZE N°1 18X10H23CM               | 1,93 CHF | 96  | 2,32 CHF | 48 | CARTON     | Noel | 75 |
| 32242 | SAC FNT. BOULES BRONZE N°2 26X12H32CM               | 2,49 CHF | 96  | 3,00 CHF | 48 | CARTON     | Noel | 75 |
| 32243 | BOITE RIGIDE BOULES BRONZE 17X7,5H3CM               | 3,89 CHF | 48  | 4,68 CHF | 24 | CARTON     | Noel | 75 |
| 32268 | BOULE PLEXI + FOURREAU BOULES BRONZE D12/15X10H19CM | 1,93 CHF | 100 | 2,32 CHF | 50 | PET/CARTON | Noel | 75 |

# Catalogue spécial Noël 2026



24723 | 25X18H1,5CM



24729 | 21,5X16H2CM



24726 | 30X10H1,5CM

24730 | 24X18H2,5CM

24731 | 30X22H2,5CM



24721 | 37X8,5H4CM



24551 | 9X2H11/D5,5H4CM



31330 | 2X2H2CM



19940 | 56X13,5H17CM



24550 | 9X2H1CM

76

|       |  |           |    |           |    |          |      |    |
|-------|--|-----------|----|-----------|----|----------|------|----|
| 18772 | SEAU A GLACE PLEXI TRANSPARENT D19H18CM          | 10,05 CHF | 24 | 12,04 CHF | 6  | PVC      | Noel | 76 |
| 19940 | CONTENANT OVALE NOIR INT. OR N°4 56X13,5H17CM    | 21,53 CHF | 6  | 25,84 CHF | 3  | RESINE   | Noel | 76 |
| 22731 | VERRE S/PIED ARABESQUES N°1 D9H7,5CM             | 2,66 CHF  | 24 | 3,22 CHF  | 12 | VERRE    | Noel | 76 |
| 22732 | VERRE S/PIED ARABESQUES N°2 D10H10,5CM           | 2,94 CHF  | 24 | 3,53 CHF  | 12 | VERRE    | Noel | 76 |
| 22733 | VERRE EVASE S/PIED ARABESQUES D9H20CM            | 3,61 CHF  | 24 | 4,34 CHF  | 12 | VERRE    | Noel | 76 |
| 24550 | 170ML FLASQUE WHISKY CUIR CAMEL 9X2H11CM         | 13,69 CHF | 4  | 16,44 CHF | 2  | INOX     | Noel | 76 |
| 24551 | SET DE FLASQUE WHISKY NOIR 9X2H11/D5,5H4CM       | 20,97 CHF | 4  | 25,17 CHF | 2  | INOX     | Noel | 76 |
| 24721 | PLATEAU ALLONGE NOIR BORD RELEVÉ BRUN 37X8,5H4CM | 8,37 CHF  | 12 | 10,05 CHF | 6  | MELAMINE | Noel | 76 |
| 24723 | PLATEAU RECT. NOIR B. BRUN N°2 25X18H1,5CM       | 14,81 CHF | 12 | 17,78 CHF | 6  | MELAMINE | Noel | 76 |
| 24726 | PLATEAU ALLONGE NOIR MARBRE OR N°2 30X10H1,5CM   | 7,53 CHF  | 12 | 9,04 CHF  | 6  | MELAMINE | Noel | 76 |
| 24729 | PLATEAU RECT. NOIR MARBRE OR N°1 21,5X16H2CM     | 7,25 CHF  | 12 | 8,68 CHF  | 6  | MELAMINE | Noel | 76 |
| 24730 | PLATEAU RECT. NOIR MARBRE OR N°2 24X18H2,5CM     | 9,10 CHF  | 12 | 10,89 CHF | 6  | MELAMINE | Noel | 76 |
| 24731 | PLATEAU RECT. NOIR MARBRE OR N°3 30X22H2,5CM     | 12,68 CHF | 12 | 15,23 CHF | 6  | MELAMINE | Noel | 76 |
| 31330 | 9 PIERRES POUR WHISKY 2X2H2CM                    | 11,17 CHF | 4  | 13,41 CHF | 2  | PIERRE   | Noel | 76 |

# Catalogue spécial Noël 2026



|       |   |           |     |           |    |       |      |    |
|-------|---|-----------|-----|-----------|----|-------|------|----|
| 15320 | POT DROIT COUVERCLE D6H8,5CM                          | 2,30 CHF  | 144 | 2,77 CHF  | 24 | VERRE | Noel | 77 |
| 15336 | POT AVEC COUVERCLE METAL N°3 10X8H10CM                | 3,33 CHF  | 50  | 4,00 CHF  | 20 | VERRE | Noel | 77 |
| 15339 | POT AVEC COUVERCLE METAL N°4 13X10H15CM               | 5,57 CHF  | 24  | 6,69 CHF  | 12 | VERRE | Noel | 77 |
| 15420 | BOCAL A BONBONS N°1 10X10H15CM                        | 4,73 CHF  | 24  | 5,68 CHF  | 12 | VERRE | Noel | 77 |
| 15430 | BOCAL A BONBONS N°2 16X16H23CM                        | 11,45 CHF | 12  | 13,72 CHF | 6  | VERRE | Noel | 77 |
| 15473 | BONBONNIERE DROITE RONDE N°1 D6H10CM                  | 3,50 CHF  | 48  | 4,20 CHF  | 12 | VERRE | Noel | 77 |
| 15474 | BONBONNIERE DROITE RONDE N°2 D8H14CM                  | 5,01 CHF  | 12  | 6,02 CHF  | 6  | VERRE | Noel | 77 |
| 15475 | BONBONNIERE DROITE N°3 D10H18CM                       | 7,53 CHF  | 24  | 9,04 CHF  | 12 | VERRE | Noel | 77 |
| 15476 | BONBONNIERE DROITE N°4 D13H22CM                       | 11,17 CHF | 12  | 13,41 CHF | 6  | VERRE | Noel | 77 |
| 22510 | BONBONNIERE COUVERCLE HERMETIQUE N°1 D11H16CM -960ML  | 8,37 CHF  | 24  | 10,05 CHF | 12 | VERRE | Noel | 77 |
| 22511 | BONBONNIERE COUVERCLE HERMETIQUE N°2 D13,5H22CM -1,8L | 13,97 CHF | 24  | 16,77 CHF | 12 | VERRE | Noel | 77 |
| 22513 | BONBONNIERE COUVERCLE HERMETIQUE N°4 D20H30CM - 5,65L | 27,97 CHF | 8   | 33,57 CHF | 4  | VERRE | Noel | 77 |
| 22609 | CONTENANT FLEUR GIVRE BORD OR N°2 D14H7CM             | 10,61 CHF | 12  | 12,74 CHF | 6  | VERRE | Noel | 77 |
| 22610 | CONTENANT FLEUR GIVRE BORD OR N°3 D16H8CM             | 11,73 CHF | 12  | 14,08 CHF | 6  | VERRE | Noel | 77 |
| 22680 | *CLOCHE TRANSPARENTE D7,3/9H12CM                      | 6,97 CHF  | 24  | 8,37 CHF  | 12 | VERRE | Noel | 77 |

# Catalogue spécial Noël 2026



|       |  |           |    |           |    |              |      |    |
|-------|--|-----------|----|-----------|----|--------------|------|----|
| 19143 | CONTENANT OVALE OR CUIR INT. NOIR N°4 56X13,5H17CM | 24,05 CHF | 6  | 28,87 CHF | 3  | RESINE       | Noel | 78 |
| 19144 | ASSIETTE OR CUIR D33H1,5CM                         | 8,37 CHF  | 12 | 10,05 CHF | 6  | RESINE       | Noel | 78 |
| 22650 | PHOTOPHORE GIVRE JOYEUSES FETES DORE N°1 D9H10CM   | 5,57 CHF  | 12 | 6,69 CHF  | 6  | VERRE        | Noel | 78 |
| 22651 | PHOTOPHORE GIVRE JOYEUSES FETES DORE N°2 D13H8CM   | 8,09 CHF  | 12 | 9,66 CHF  | 6  | VERRE        | Noel | 78 |
| 22728 | BONBONNIERE BOULE NOEUD OR D11H13CM                | 11,17 CHF | 16 | 13,41 CHF | 8  | VERRE        | Noel | 78 |
| 22734 | COUPE S/PIED BRONZE ANSE BOULES D11H9CM            | 3,02 CHF  | 24 | 3,61 CHF  | 12 | VERRE        | Noel | 78 |
| 22735 | COUPE S/PIED GRIS FONCE ANSE BOULES D11H9CM        | 3,02 CHF  | 24 | 3,61 CHF  | 12 | VERRE        | Noel | 78 |
| 22741 | PHOTOPHORE NOEUD OR D9H10CM                        | 6,97 CHF  | 16 | 8,37 CHF  | 8  | VERRE        | Noel | 78 |
| 32137 | ENVELOPPE NOIRE LIGNES OR 20X7H14/30CM             | 2,21 CHF  | 36 | 2,66 CHF  | 12 | CARTON       | Noel | 78 |
| 35057 | MUG BEIGE LIGNES NOEUD OR D9H9CM                   | 7,53 CHF  | 12 | 8,93 CHF  | 6  | PORCELAINE   | Noel | 78 |
| 35082 | CESTO NOEUD OR 27,5X20,5H12CM                      | 6,13 CHF  | 24 | 7,36 CHF  | 12 | CARTON       | Noel | 78 |
| 40664 | 25MMX25MT RUBAN VOILE ECRU DESSIN OR               | 35,87 CHF | 3  | 43,04 CHF | 1  | LAITONNE     | Noel | 78 |
| 41010 | 25MMX20MT RUBAN VOILE LIGNE OR                     | 17,67 CHF | 5  | 21,22 CHF | 2  | LAITONNE     | Noel | 78 |
| 41074 | 60MMX20MT RUBAN OR MARTELE 60MMX20MT               | 29,71 CHF | 3  | 35,64 CHF | 1  | NON LAITONNE | Noel | 78 |
| 41145 | 25MMX18MT RUBAN CAMEL ETOILE OR 25MMX18MT          | 27,52 CHF | 5  | 33,04 CHF | 2  | NON LAITONNE | Noel | 78 |
| 41463 | 25MMX20MT RUBAN OR TREILLIS 25MMX20MT              | 12,54 CHF | 5  | 15,06 CHF | 2  | LAITONNE     | Noel | 78 |
| 45020 | RUBAN OR MARTELE 25MMX20MT                         | 14,34 CHF | 5  | 17,22 CHF | 2  | NON LAITONNE | Noel | 78 |
| 53293 | BOITE BLANCHE NOEUD "Joyeuses Fêtes" 16,5X14H2,7CM | 6,69 CHF  | 24 | 8,09 CHF  | 12 | ZINC         | Noel | 78 |
| 53294 | BOITE BLANCHE NOEUD "Joyeuses Fêtes" 21,5X14H2CM   | 7,53 CHF  | 24 | 9,04 CHF  | 12 | ZINC         | Noel | 78 |

**Catalogue spécial Noël 2026**

**Présentoirs papier accordéon**

- 1. 1200125 | D20H13CM
- 2. 1200127 | D27H17,5CM
- 3. 1200128 | D36H23CM



|         |                                     |           |    |           |   |        |      |    |
|---------|-------------------------------------|-----------|----|-----------|---|--------|------|----|
| 1200125 | D20H13CM TABLE ECRU ACCORDEON       | 19,60 CHF | 6  |           |   | CARTON | Noel | 79 |
| 1200127 | D27H17,5CM TABLE ECRU ACCORDEON     | 33,60 CHF | 4  |           |   | CARTON | Noel | 79 |
| 1200128 | D36H23CM TABLE ECRU ACCORDEON       | 56,00 CHF | 4  |           |   | CARTON | Noel | 79 |
| 22751   | VERRE A EAU BOULES OR D9H12CM       | 5,01 CHF  | 12 | 6,02 CHF  | 6 | VERRE  | Noel | 79 |
| 22752   | VERRE A VIN BOULES OR D8H22CM       | 12,57 CHF | 12 | 15,09 CHF | 6 | VERRE  | Noel | 79 |
| 35083   | BOITE A CHAPEAU NOEUD OR D31,5H12CM | 16,77 CHF | 8  | 20,13 CHF | 4 | CARTON | Noel | 79 |

# Catalogue spécial Noël 2026



80

|       |  |           |    |           |    |              |      |    |
|-------|--|-----------|----|-----------|----|--------------|------|----|
| 19227 | BOITE A BISCUITS BLEUE COUV. BAMBOU 18X15,5H6,5CM      | 13,41 CHF | 8  | 16,10 CHF | 4  | ZINC         | Noel | 80 |
| 19755 | PLATEAU BLEU ROI N°1 D15H1CM                           | 5,94 CHF  | 12 | 7,14 CHF  | 6  | METAL        | Noel | 80 |
| 19756 | PLATEAU BLEU ROI N°2 D20H1,5CM                         | 9,77 CHF  | 12 | 11,73 CHF | 6  | METAL        | Noel | 80 |
| 22560 | VASE PLAT BLEU MARINE PRIX NET 18X9H16CM               | 11,20 CHF | 2  |           |    | VERRE        | Noel | 80 |
| 22667 | BONBONNIERE SAPIN BLEU MOIRE D9/12H17CM                | 11,73 CHF | 12 | 13,97 CHF | 6  | VERRE        | Noel | 80 |
| 24894 | 2 BOLS EVASES BLEU FONCE S/PLANCHE D9H4,5/18X9,5CM     | 12,57 CHF | 12 | 15,09 CHF | 4  | PORCELAINE   | Noel | 80 |
| 24938 | CONTENANT ARABESQUES BLEU FONCE 2ASS D13H7,5CM         | 7,53 CHF  | 16 | 9,02 CHF  | 8  | PORCELAINE   | Noel | 80 |
| 24944 | MUG ARABESQUES BLEU FONCE 4ASS D8H10,5CM               | 5,29 CHF  | 24 | 6,41 CHF  | 12 | PORCELAINE   | Noel | 80 |
| 31656 | CESTO VILLAGE BLEU POIGNEES 27,5X20,5H12CM             | 6,69 CHF  | 36 | 8,04 CHF  | 12 | CARTON       | Noel | 80 |
| 33597 | MUG DISCO BLEU D9H11CM                                 | 7,53 CHF  | 12 | 9,04 CHF  | 6  | PORCELAINE   | Noel | 80 |
| 33700 | CONTENANT GAUFRETTE BLEU/OR 15X9H8CM                   | 10,61 CHF | 12 | 12,74 CHF | 4  | CERAMIQUE    | Noel | 80 |
| 40407 | 38MMX20MT RUBAN TREILLIS OR                            | 13,58 CHF | 5  | 16,30 CHF | 2  | NON LAITONNE | Noel | 80 |
| 41576 | 15MMX25MT RUBAN BLEU CRISTAUX BLANCS                   | 28,20 CHF | 3  | 33,82 CHF | 1  | NON LAITONNE | Noel | 80 |
| 41577 | 25MMX25MT RUBAN BLEU CRISTAUX BLANCS                   | 30,24 CHF | 3  | 36,29 CHF | 1  | NON LAITONNE | Noel | 80 |
| 41581 | 25MMX25MT RUBAN VOILE BLEU BORD BRILLANT               | 30,24 CHF | 3  | 36,29 CHF | 1  | NON LAITONNE | Noel | 80 |
| 53374 | BOITE BLANCHE FLOCONS "Meilleurs Voeux" 20,5X7,5H2,6CM | 6,13 CHF  | 12 |           |    | ZINC         | Noel | 80 |
| 72012 | BOLDUC BLEU BORD POINTILLES 18MMX100MT                 | 9,80 CHF  | 2  |           |    | POLYPROPYLE  | Noel | 80 |

# Catalogue spécial Noël 2026



1100351 | 27X9X38,5CM

1100350 | 18X9X38,5CM

1100349 | 9X9X38,5CM

1100365 | 20,5X7,7X7CM  
1100366 | 29X23X8,5CM



|         |  |           |    |  |  |           |      |    |
|---------|--|-----------|----|--|--|-----------|------|----|
| 1100349 | NIGHT B.SCATOLA 1 BOUTEILLE F POIGNEE 9X9H38,5CM | 1,99 CHF  | 50 |  |  | CARTON    | Noel | 81 |
| 1100350 | NIGHT B.SCATOLA 2 BOUTEILLES F. 18X9X38,5CM      | 2,77 CHF  | 30 |  |  | CARTON    | Noel | 81 |
| 1100351 | NIGHT B.SCATOLA 3 BOUTEILLES F. 27X9X38,5CM      | 3,84 CHF  | 30 |  |  | CARTON    | Noel | 81 |
| 1100365 | NIGHT CORBEILLE HEXAGONALE 20,5X17X7CM           | 4,20 CHF  | 50 |  |  | CARTON    | Noel | 81 |
| 1100366 | NIGHT CORBEILLE HEXAGONALE 29X23X8,5CM           | 5,10 CHF  | 30 |  |  | CARTON    | Noel | 81 |
| 52779   | STICKERS CADEAUX BRONZE NP. 500PCS PN D3,8CM     | 39,17 CHF | 1  |  |  | PLASTIQUE | Noel | 81 |

# Catalogue spécial Noël 2026



82

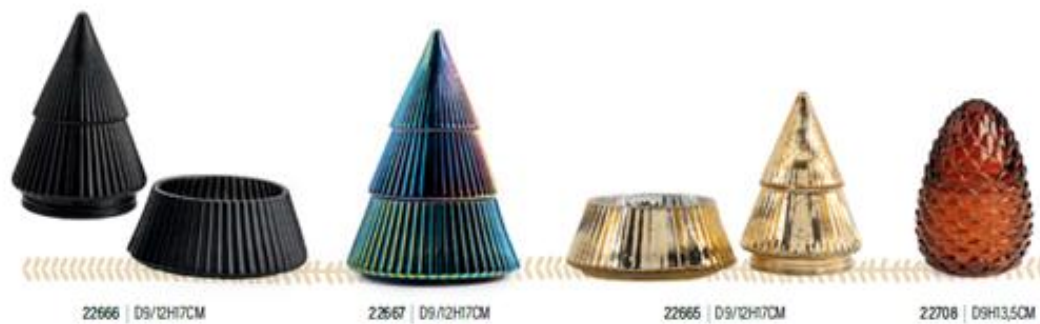
|       |  |           |    |           |   |       |      |    |
|-------|--|-----------|----|-----------|---|-------|------|----|
| 22702 | BONBONNIERE GLAND OR/BLANC MAT N°1 D7H12CM   | 8,37 CHF  | 12 | 10,05 CHF | 6 | VERRE | Noel | 82 |
| 22703 | BONBONNIERE GLAND OR/BLANC MAT N°2 D11H15CM  | 11,17 CHF | 8  | 13,41 CHF | 4 | VERRE | Noel | 82 |
| 22710 | BONBONNIERE BOULE LIGNES BRUNES N°1 D8H9,5CM | 8,37 CHF  | 12 | 10,05 CHF | 6 | VERRE | Noel | 82 |
| 22711 | BONBONNIERE BOULE LIGNES BRUNES N°2 D11H13CM | 12,01 CHF | 8  | 14,42 CHF | 4 | VERRE | Noel | 82 |
| 22712 | BONBONNIERE BOULE LIGNES BRUNES N°3 D13H15CM | 14,81 CHF | 6  | 17,78 CHF | 3 | VERRE | Noel | 82 |
| 22713 | BONBONNIERE LIGNES BRUNES N°1 D7,5H8CM       | 8,37 CHF  | 16 | 10,05 CHF | 8 | VERRE | Noel | 82 |
| 22714 | BONBONNIERE LIGNES BRUNES N°2 D9,5H9,5CM     | 10,72 CHF | 16 | 12,85 CHF | 8 | VERRE | Noel | 82 |
| 22717 | BONBONNIERE BOULE BLC. STRASS N°2 D11H13CM   | 12,01 CHF | 8  | 14,42 CHF | 4 | VERRE | Noel | 82 |
| 22718 | BONBONNIERE BOULE BLC. STRASS N°3 D13H14,5CM | 14,81 CHF | 6  | 17,78 CHF | 3 | VERRE | Noel | 82 |
| 22719 | BONBONNIERE BOULE OR BRILLANT N°1 D8H10CM    | 8,37 CHF  | 12 | 10,05 CHF | 6 | VERRE | Noel | 82 |
| 22720 | BONBONNIERE BOULE OR BRILLANT N°2 D11H13CM   | 12,01 CHF | 8  | 14,42 CHF | 4 | VERRE | Noel | 82 |
| 22727 | BONBONNIERE BOULE NOEUD PERLE D11H13CM       | 11,17 CHF | 16 | 13,41 CHF | 8 | VERRE | Noel | 82 |
| 22728 | BONBONNIERE BOULE NOEUD OR D11H13CM          | 11,17 CHF | 16 | 13,41 CHF | 8 | VERRE | Noel | 82 |
| 22729 | BONBONNIERE BOULE NOEUD NOIR D11H13CM        | 11,17 CHF | 16 | 13,41 CHF | 8 | VERRE | Noel | 82 |

# Catalogue spécial Noël 2026



**Boîte transparente**

Fond or  
1015466 | 8X8H13CM |  
1015483 | 12X12H15CM |  
1015458 | 12X12H19CM |  
115677 | 13X13H20CM |  
32027 | 12X12X19CM avec corde



|         |   |           |     |           |     |           |      |    |
|---------|---|-----------|-----|-----------|-----|-----------|------|----|
| 1015458 | BOITE TRANS.AUTOMATIQUE + FD SURELEVE OR 12X12H19CM   | 2,52 CHF  | 100 | 3,02 CHF  | 20  | PET       | Noel | 83 |
| 1015466 | BOITE TRANS.AUTOMATIQUE + FD SURELEVE OR 8X8H13CM     | 1,54 CHF  | 200 | 1,85 CHF  | 50  | PET       | Noel | 83 |
| 1015483 | BOITE TRANS.AUTOMATIQUE + FD SURELEVE OR 12X12H15CM   | 2,30 CHF  | 100 | 2,74 CHF  | 20  | PET       | Noel | 83 |
| 1115677 | BOITE TRANS.AUTOMATIQUE + FOND SURELEVE OR 13X13H20CM | 2,74 CHF  | 200 | 3,30 CHF  | 100 | PET       | Noel | 83 |
| 22665   | BONBONNIERE SAPIN OR METALLISE D9/12H17CM             | 11,73 CHF | 12  | 13,97 CHF | 6   | VERRE     | Noel | 83 |
| 22666   | BONBONNIERE SAPIN NOIR MAT D9/12H17CM                 | 11,73 CHF | 12  | 13,97 CHF | 6   | VERRE     | Noel | 83 |
| 22667   | BONBONNIERE SAPIN BLEU MOIRE D9/12H17CM               | 11,73 CHF | 12  | 13,97 CHF | 6   | VERRE     | Noel | 83 |
| 22669   | BONBONNIERE SAPIN BRONZE METALLISE D9/12H17CM         | 11,73 CHF | 12  | 13,97 CHF | 6   | VERRE     | Noel | 83 |
| 22704   | BONBONNIERE GLAND VERT FONCE BI-MATIERE N°1 D7H12CM   | 8,37 CHF  | 12  | 10,05 CHF | 6   | VERRE     | Noel | 83 |
| 22705   | BONBONNIERE GLAND VERT FONCE BI-MATIERE N°2 D11H15CM  | 11,17 CHF | 8   | 13,41 CHF | 4   | VERRE     | Noel | 83 |
| 22706   | BONBONNIERE GLAND ROUGE BI-MATIERE N°1 D7H12CM        | 8,37 CHF  | 12  | 10,05 CHF | 6   | VERRE     | Noel | 83 |
| 22707   | BONBONNIERE GLAND ROUGE BI-MATIERE N°2 D11H15CM       | 11,17 CHF | 8   | 13,41 CHF | 4   | VERRE     | Noel | 83 |
| 22708   | BONBONNIERE POMME DE PIN D9H13,5CM                    | 11,17 CHF | 8   | 13,41 CHF | 4   | VERRE     | Noel | 83 |
| 22715   | BONBONNIERE BOULE VELOURS BORDEAUX N°1 D8H10CM        | 8,37 CHF  | 12  | 10,05 CHF | 6   | VERRE     | Noel | 83 |
| 22716   | BONBONNIERE BOULE VELOURS BORDEAUX N°2 D11H13CM       | 11,17 CHF | 8   | 13,41 CHF | 4   | VERRE     | Noel | 83 |
| 22721   | BONBONNIERE BOULE VERT FONCE BRILLANT N°1 D8H10CM     | 8,37 CHF  | 12  | 10,05 CHF | 6   | VERRE     | Noel | 83 |
| 22722   | BONBONNIERE BOULE VERT FONCE BRILLANT N°2 D11H13CM    | 12,01 CHF | 8   | 14,42 CHF | 4   | VERRE     | Noel | 83 |
| 32018   | BOITE TRANS. AUTOMATIQUE FOND KRAFT 12X12X19CM        | 2,07 CHF  | 200 | 2,63 CHF  | 40  | PET/KRAFT | Noel | 83 |
| 32027   | BOITE TRANS. AUTOMATIQUE FOND KRAFT CORDES 12X12X19CM | 2,38 CHF  | 200 | 2,97 CHF  | 40  | PET/KRAFT | Noel | 83 |

# Catalogue spécial Noël 2026

Bois



35036 | 54X9H23CM TIROIR 6,5X3H3CM



35035 | TIROIR 5X3H3CM 3X25H39CM

Carton



33968 | SOCLE 34X24CM  
Taille des maisons  
5X5H8CM(2) - 7X3H10,5CM  
7X4H10CM - 7X4,5H12CM  
5X5H14CM(2) - 6X3H11CM

Kit dégustation

8 maisons + socle  
Livré à plat



33969 | SOCLE 34X24CM

Bois



35116 | 4ASS 5X4,3H5,5CM  
Ouverture par le toit



33967 | BOITE 5,5X5,5H5,5CM 43X29CM

86

|       |  |           |    |           |    |        |      |    |
|-------|--|-----------|----|-----------|----|--------|------|----|
| 33967 | 5,5X5,5H5,5CM 24 BTES BLC.NOIR S/PLATEAU 43X29CM                 | 14,99 CHF | 10 | 20,13 CHF | 5  | CARTON | Noel | 86 |
| 33968 | 8X3H11CM PACK DECOUVERTE 8 MAISONS BRUN/BEIGE 34X24CM            | 8,93 CHF  | 10 | 10,72 CHF | 5  | CARTON | Noel | 86 |
| 33969 | 8X3H11CM PACK DECOUVERTE 8 MAISONS ROUGE/VERT 34X24CM            | 8,93 CHF  | 10 | 10,72 CHF | 5  | CARTON | Noel | 86 |
| 35035 | CALENDRIER MAISON SAPINS TIROIR 5X3H3CM 31X7,5H39CM              | 34,00 CHF | 2  |           |    | BOIS   | Noel | 86 |
| 35036 | CALENDRIER ALLONGE MAISON DECO SAPINS 54X9H23CM TIROIR 6,5X3H3CM | 39,00 CHF | 2  |           |    | BOIS   | Noel | 86 |
| 35116 | MAISONNETTE 4ASS 5X4,3H5,5CM                                     | 1,93 CHF  | 96 | 2,32 CHF  | 24 | BOIS   | Noel | 86 |

# Catalogue spécial Noël 2026



33963 | 20,3X20,3H30CM BOITE 3X3CM



52214 | 5,5XH5,5CM  
48 STICKERS



13436 | 5H4,5CM 24 CLIPS



33965 | D20,5H9,5CM  
TIROR 5X5X4,5CM



33566 | 32X22H3CM 4,5X4,5X3CM



33960 | 56X3,5H32CM 3,5X3,5X3CM



33964 | D20,5H9,5CM 5X5X4,5CM



33962 | 45XH45CM 4X4X3,5CM



33961 | 45XH45CM 4X4X3,5CM



|       |   |           |    |           |   |        |      |    |
|-------|---|-----------|----|-----------|---|--------|------|----|
| 13436 | 24 CLIPS CALENDRIER DE L AVENT ETOILE 5H4,5CM             | 11,15 CHF | 4  | 12,74 CHF | 2 | BOIS   | Noel | 87 |
| 33566 | CALENDRIER BOULES DOREES 32X22H3CM                        | 17,13 CHF | 10 |           |   | CARTON | Noel | 87 |
| 33960 | CALENDRIER DE L'AVENT NEW YORK 56X3,5H32CM                | 16,88 CHF | 12 |           |   | CARTON | Noel | 87 |
| 33961 | CALENDRIER DE L'AVENT PYRAMIDE VERT FLOCONS OR 45X3H45CM  | 15,93 CHF | 12 |           |   | CARTON | Noel | 87 |
| 33962 | CALENDRIER DE L'AVENT LUTINS ROUGES 45X3H45CM             | 15,93 CHF | 12 |           |   | CARTON | Noel | 87 |
| 33963 | CALENDRIER DE L'AVENT SAPIN 24 BTES. 20,3X20,3H30CM       | 18,79 CHF | 6  |           |   | CARTON | Noel | 87 |
| 33964 | CALENDRIER DE L'AVENT CERCLE BTES. ROUGE/VERT D20,5H9,5CM | 18,79 CHF | 10 |           |   | CARTON | Noel | 87 |
| 33965 | CALENDRIER DE L'AVENT CARROUSEL NOIR/OR D20,5H9,5CM       | 18,79 CHF | 10 |           |   | CARTON | Noel | 87 |
| 52214 | 5,5X3H5,5CM 2 PACK DE 24 STICKERS NUMERO 1 A 24 OR        | 18,79 CHF | 2  |           |   | CARTON | Noel | 87 |

# Catalogue spécial Noël 2026



|       |   |          |    |          |    |        |      |    |
|-------|---|----------|----|----------|----|--------|------|----|
| 31836 | SAC LUTINS ROUGE N°2 26X10H32CM                     | 2,77 CHF | 48 | 3,33 CHF | 24 | CARTON | Noel | 88 |
| 31837 | SAC LUTINS ROUGE N°3 30X12H39CM                     | 3,61 CHF | 48 | 4,34 CHF | 24 | CARTON | Noel | 88 |
| 31970 | SAC HO HO HO NOEL 4ASS 18X8H23CM                    | 2,02 CHF | 96 | 2,41 CHF | 48 | CARTON | Noel | 88 |
| 32210 | SAC CADEAUX VERT/ROUGE 2ASS 18X8H23CM               | 1,65 CHF | 96 | 1,99 CHF | 48 | CARTON | Noel | 88 |
| 32212 | SAC CADEAUX CARREAUX/FLOCONS ROUGES 2ASS 26X10H32CM | 2,30 CHF | 48 | 2,74 CHF | 24 | CARTON | Noel | 88 |
| 32214 | SAC SAPINS/MAISONS 4ASS 18X8H23CM                   | 2,02 CHF | 96 | 2,41 CHF | 48 | CARTON | Noel | 88 |
| 32216 | SAC MAISON GINGER 18X8H23CM                         | 2,02 CHF | 96 | 2,41 CHF | 48 | CARTON | Noel | 88 |
| 32218 | SAC CHATONS NOEL 2ASS 18X8H23CM                     | 2,02 CHF | 96 | 2,41 CHF | 48 | CARTON | Noel | 88 |
| 32219 | SAC ROUGE GINGER 2ASS N°1 18X8H23CM                 | 2,02 CHF | 96 | 2,41 CHF | 48 | CARTON | Noel | 88 |
| 32220 | SAC ROUGE GINGER 2ASS N°2 26X10H32CM                | 2,74 CHF | 48 | 3,30 CHF | 24 | CARTON | Noel | 88 |

# Catalogue spécial Noël 2026



32223 | 4ASS 15X9H14,5CM

32224 | 4ASS 18X10H23CM

32225 | 4ASS 26X12H32CM



31974 | 4ASS 26X12H32CM



31973 | 4ASS 18X10H23CM



32217 | 4ASS 18X8H23CM



32215 | 4ASS 18X8H23CM



31027 | 4ASS 18X10H23CM

|       |   |          |    |          |    |        |      |    |
|-------|---|----------|----|----------|----|--------|------|----|
| 31027 | SAC COEUR ROUGE 4ASS 18X10H23CM               | 1,93 CHF | 96 | 2,32 CHF | 48 | CARTON | Noel | 89 |
| 31973 | SAC THEME NOEL BLANC/OR 4ASS N°1 18X10H23CM   | 2,02 CHF | 96 | 2,41 CHF | 48 | CARTON | Noel | 89 |
| 31974 | SAC THEME NOEL BLANC/OR 4ASS N°2 26X12H32CM   | 2,77 CHF | 96 | 3,33 CHF | 48 | CARTON | Noel | 89 |
| 32215 | SAC HOUX 4ASS 18X8H23CM                       | 2,02 CHF | 96 | 2,41 CHF | 48 | CARTON | Noel | 89 |
| 32217 | SAC THEME NOEL 4ASS 18X8H23CM                 | 2,02 CHF | 96 | 2,41 CHF | 48 | CARTON | Noel | 89 |
| 32223 | SAC KRAFT THEME NOEL DORE 4ASS 15X6H14,5CM    | 1,37 CHF | 96 | 1,65 CHF | 48 | CARTON | Noel | 89 |
| 32224 | SAC KRAFT THEME NOEL DORE 4ASS N°1 18X10H23CM | 2,02 CHF | 96 | 2,41 CHF | 48 | CARTON | Noel | 89 |
| 32225 | SAC KRAFT THEME NOEL DORE 4ASS N°2 26X12H32CM | 2,74 CHF | 48 | 3,30 CHF | 24 | CARTON | Noel | 89 |

# Catalogue spécial Noël 2026



## Pochons velours



|       |  |          |     |          |    |         |      |    |
|-------|--|----------|-----|----------|----|---------|------|----|
| 11152 | POCHON VELOURS BLANC 8H10CM                      | 1,20 CHF | 80  | 1,46 CHF | 40 | VELOURS | Noel | 90 |
| 11154 | POCHON VELOURS ROSE 8H10CM                       | 1,20 CHF | 80  | 1,46 CHF | 40 | VELOURS | Noel | 90 |
| 11155 | POCHON VELOURS VIEUX ROSE 8H10CM                 | 1,20 CHF | 80  | 1,46 CHF | 40 | VELOURS | Noel | 90 |
| 11156 | POCHON VELOURS BORDEAUX 8H10CM                   | 1,20 CHF | 80  | 1,46 CHF | 40 | VELOURS | Noel | 90 |
| 11158 | POCHON VELOURS BRUN 8H10CM                       | 1,20 CHF | 80  | 1,46 CHF | 40 | VELOURS | Noel | 90 |
| 11159 | POCHON VELOURS OR 8H10CM                         | 1,20 CHF | 80  | 1,46 CHF | 40 | VELOURS | Noel | 90 |
| 11160 | POCHON VELOURS TERRA 8H10CM                      | 1,20 CHF | 80  | 1,46 CHF | 40 | VELOURS | Noel | 90 |
| 11163 | POCHON VELOURS BLEU NUIT 8H10CM                  | 1,20 CHF | 80  | 1,46 CHF | 40 | VELOURS | Noel | 90 |
| 31321 | BOITE CONVIVE BEIGE BOULES OR 5X5H5CM            | 0,81 CHF | 96  | 0,98 CHF | 48 | CARTON  | Noel | 90 |
| 31664 | BOITE BLANCHE FENT. CERCLES OR 13X4,5H18CM       | 2,21 CHF | 48  | 2,66 CHF | 24 | CARTON  | Noel | 90 |
| 31665 | SAC BLANC FENT. CERCLES OR SMALL 14,4X7H15,5CM   | 1,93 CHF | 96  | 2,32 CHF | 48 | CARTON  | Noel | 90 |
| 31672 | SAC CARRE BLANC FENT. CERCLES OR N°1 12X12H12CM  | 2,10 CHF | 96  | 2,52 CHF | 48 | CARTON  | Noel | 90 |
| 31673 | SAC CARRE BLANC FENT. CERCLES OR N°2 20X20H20CM  | 2,77 CHF | 96  | 3,33 CHF | 48 | CARTON  | Noel | 90 |
| 31678 | BUSTA BLANCHE MOTIFS DORES 8ASS 20X2H5CM         | 2,77 CHF | 48  | 3,33 CHF | 24 | CARTON  | Noel | 90 |
| 31731 | CUBE POIS/LIGNES DORES N°2 2ASS 9X9H8CM          | 0,95 CHF | 96  | 1,15 CHF | 48 | CARTON  | Noel | 90 |
| 31733 | BUSTA POIS/LIGNES DORES N°2 2ASS 15X12H5CM       | 1,26 CHF | 48  | 1,54 CHF | 24 | CARTON  | Noel | 90 |
| 31734 | BUSTA POIS/LIGNES DORES N°3 2ASS 20,5X15,5H4,5CM | 1,54 CHF | 48  | 1,85 CHF | 24 | CARTON  | Noel | 90 |
| 31740 | POCHETTE CADEAU NOIRE 9,5X8H23CM                 | 0,98 CHF | 144 | 1,18 CHF | 48 | CARTON  | Noel | 90 |
| 31741 | POCHETTE CADEAU LOSANGE OR 10X5,5H17,5CM         | 1,09 CHF | 144 | 1,32 CHF | 48 | CARTON  | Noel | 90 |
| 32240 | MINI BOITE BOULES BRONZE 5X5H5CM                 | 0,81 CHF | 96  | 0,98 CHF | 48 | CARTON  | Noel | 90 |
| 32241 | SAC FNT. BOULES BRONZE N°1 18X10H23CM            | 1,93 CHF | 96  | 2,32 CHF | 48 | CARTON  | Noel | 90 |
| 32242 | SAC FNT. BOULES BRONZE N°2 26X12H32CM            | 2,49 CHF | 96  | 3,00 CHF | 48 | CARTON  | Noel | 90 |
| 32244 | MINI BOITE SAPIN FONCE 5X5H5CM                   | 0,81 CHF | 96  | 0,98 CHF | 48 | CARTON  | Noel | 90 |
| 32245 | SAC FNT. SAPIN FONCE N°1 18X10H23CM              | 1,93 CHF | 96  | 2,32 CHF | 48 | CARTON  | Noel | 90 |
| 32246 | SAC FNT. SAPIN FONCE N°2 26X12H32CM              | 2,49 CHF | 96  | 3,00 CHF | 48 | CARTON  | Noel | 90 |

**24 boîtes convives + tour offerte**

BOITE 2ASS 4X4H4CM TOUR 12,5X12,5H30CM



|       |  |           |     |           |    |               |      |    |
|-------|--|-----------|-----|-----------|----|---------------|------|----|
| 19240 | BOITE CONSERVE PVC COUV. ZINC D6.3H4CM                               | 1,09 CHF  | 48  | 1,32 CHF  | 24 | PVC           | Noel | 91 |
| 19789 | BOITE RONDE PVC COUVERCLE ZINC D5H7CM                                | 1,93 CHF  | 150 | 2,32 CHF  | 50 | PVC           | Noel | 91 |
| 31015 | SACOCHE CARREE TRANSPARENTE PN 6,5X6,5H6,5CM                         | 0,28 CHF  | 50  |           |    | PLASTIQUE     | Noel | 91 |
| 31440 | POCHETTE OR FERMETURE ZIP PN 9X13CM                                  | 0,28 CHF  | 50  |           |    | PVC           | Noel | 91 |
| 31441 | POCHETTE BLANCHE FERMETURE ZIP PN 9X13CM                             | 0,28 CHF  | 50  |           |    | PVC           | Noel | 91 |
| 31910 | TOUR VILLAGE BLEU +24 BOITES SAPIN/VILLAGE 2ASS 4X4H4/12,5X12,5H30CM | 12,01 CHF | 4   | 14,42 CHF | 2  | CARTON        | Noel | 91 |
| 31911 | TOUR FLOCONS +24 BTES BLC/NOIRES 2ASS 4X4H4/12,5X12,5H30CM           | 12,01 CHF | 4   | 14,42 CHF | 2  | CARTON        | Noel | 91 |
| 31912 | TOUR SAPIN +24 BTES GNOME ROUGE/RENNE VERT 2ASS 4X4H4/12,5X12,5H30CM | 12,01 CHF | 4   | 14,42 CHF | 2  | CARTON        | Noel | 91 |
| 33793 | MINI BOTTE ROUGE N°1 6X3,5H6,5CM                                     | 1,93 CHF  | 48  | 2,32 CHF  | 24 | PLASTIQUE/FEU | Noel | 91 |
| 33981 | TASSE LOSANGES BORD OR D5,5H5,5CM                                    | 5,04 CHF  | 12  | 6,05 CHF  | 6  | PORCELAINE    | Noel | 91 |
| 92288 | PYRAMIDE TRANSPARENTE 6X6H6,5CM                                      | 1,65 CHF  | 120 | 1,96 CHF  | 60 | PLASTIQUE     | Noel | 91 |
| 92842 | GOUTTE PLATE EN PLEXI A SUSPENDRE D8H8CM                             | 1,26 CHF  | 120 | 1,51 CHF  | 60 | PLASTIQUE     | Noel | 91 |
| 93007 | ETOILE EN PLEXI A SUSPENDRE 9X9H2CM                                  | 1,65 CHF  | 120 | 1,93 CHF  | 60 | PLASTIQUE     | Noel | 91 |
| 93135 | BOITE CUBE 5X5H5,5CM   | 1,09 CHF  | 150 | 1,32 CHF  | 50 | PLASTIQUE     | Noel | 91 |
| 93424 | BOITE CARREE PVC 5X5H5CM   | 1,09 CHF  | 150 | 1,32 CHF  | 50 | PLASTIQUE     | Noel | 91 |

# Catalogue spécial Noël 2026

## Convives

H8CM |



92

53373 | 2ASS

53355 | 2ASS

|       |  |          |    |  |  |        |      |    |
|-------|--|----------|----|--|--|--------|------|----|
| 50905 | BOURSE SETA NOIR FLOCON OR MAT H8CM    | 2,10 CHF | 24 |  |  | CARTON | Noel | 92 |
| 50909 | BOURSE SETA OR CADEAUX ROUGE H8CM      | 2,10 CHF | 24 |  |  | CARTON | Noel | 92 |
| 50934 | BOURSE SETA BLANC RENNE H8CM           | 2,10 CHF | 24 |  |  | CARTON | Noel | 92 |
| 50935 | BOURSE SETA ROUGE RENNE H8CM           | 2,10 CHF | 24 |  |  | CARTON | Noel | 92 |
| 52809 | BOURSE SETA ROUGE SAPINS 3ASS H8CM     | 2,10 CHF | 24 |  |  | CARTON | Noel | 92 |
| 52810 | BOURSE SETA NOIR SAPINS 3ASS H8CM      | 2,10 CHF | 24 |  |  | CARTON | Noel | 92 |
| 52811 | BOURSE SETA OR SAPINS 3ASS H8CM        | 2,10 CHF | 24 |  |  | CARTON | Noel | 92 |
| 52813 | BOURSE SETA BLANC FLOCON H8CM          | 2,10 CHF | 24 |  |  | CARTON | Noel | 92 |
| 52814 | BOURSE SETA ROUGE FLOCON H8CM          | 2,10 CHF | 24 |  |  | CARTON | Noel | 92 |
| 53340 | BOURSE SETA NOIR RENNE LUNETTE H8CM    | 2,10 CHF | 24 |  |  | CARTON | Noel | 92 |
| 53341 | BOURSE SETA ROUGE RENNE LUNETTE H8CM   | 2,10 CHF | 24 |  |  | CARTON | Noel | 92 |
| 53342 | BOURSE SETA BLANC ELANS H8CM           | 2,10 CHF | 24 |  |  | CARTON | Noel | 92 |
| 53344 | BOURSE SETA OR FLOCON H8CM             | 2,10 CHF | 24 |  |  | CARTON | Noel | 92 |
| 53345 | BOURSE SETA ROUGE FLOCON H8CM          | 2,10 CHF | 24 |  |  | CARTON | Noel | 92 |
| 53346 | BOURSE SETA BLANC FLOCON H8CM          | 2,10 CHF | 24 |  |  | CARTON | Noel | 92 |
| 53347 | BOURSE SETA ROUGE SAPINS BLANC OR H8CM | 2,10 CHF | 24 |  |  | CARTON | Noel | 92 |
| 53348 | BOURSE SETA OR SAPINS BLANC OR H8CM    | 2,10 CHF | 24 |  |  | CARTON | Noel | 92 |
| 53349 | BOURSE SETA NOIR SAPINS BLANC OR H8CM  | 2,10 CHF | 24 |  |  | CARTON | Noel | 92 |
| 53350 | BOURSE SETA NOIR PATIN NOEL H8CM       | 2,10 CHF | 24 |  |  | CARTON | Noel | 92 |
| 53355 | BOURSE SETA BLANC GINGER 2ASSH8CM      | 2,10 CHF | 24 |  |  | CARTON | Noel | 92 |
| 53372 | BOURSE SETA OR ELANS H8CM              | 2,10 CHF | 24 |  |  | CARTON | Noel | 92 |
| 53373 | BOURSE SETA ROUGE GINGER 2ASS H8CM     | 2,10 CHF | 24 |  |  | CARTON | Noel | 92 |

# Catalogue spécial Noël 2026



93

|       |   |          |    |  |  |        |      |    |
|-------|---|----------|----|--|--|--------|------|----|
| 50901 | BOURSE SETA NOIR LUTIN 2ASS H8CM                  | 2,10 CHF | 24 |  |  | CARTON | Noel | 93 |
| 50924 | BOURSE SETA OR MAISONNETTE H8CM                   | 2,10 CHF | 24 |  |  | CARTON | Noel | 93 |
| 50926 | BOURSE SETA BLANC MAISONNETTE H8CM                | 2,10 CHF | 24 |  |  | CARTON | Noel | 93 |
| 52804 | BOURSE SETA NOIR 2ASS SAPIN ROUGE/FLOCON OR H8CM  | 2,10 CHF | 24 |  |  | CARTON | Noel | 93 |
| 53351 | BOURSE SETA ROUGE GUI H8CM                        | 2,10 CHF | 24 |  |  | CARTON | Noel | 93 |
| 53352 | BOURSE SETA BLANC GUI H8CM                        | 2,10 CHF | 24 |  |  | CARTON | Noel | 93 |
| 53353 | BOURSE SETA OR GUI H8CM                           | 2,10 CHF | 24 |  |  | CARTON | Noel | 93 |
| 53356 | BOURSE SETA ROUGE GNOME 3ASS H8CM                 | 2,10 CHF | 24 |  |  | CARTON | Noel | 93 |
| 53357 | BOURSE SETA NOIR GNOME 3ASS H8CM                  | 2,10 CHF | 24 |  |  | CARTON | Noel | 93 |
| 53358 | BOURSE SETA OR GNOME 3ASS H8CM                    | 2,10 CHF | 24 |  |  | CARTON | Noel | 93 |
| 53359 | BOURSE SETA ROUGE CHAUSSETTE NOEL H8CM            | 2,10 CHF | 24 |  |  | CARTON | Noel | 93 |
| 53360 | BOURSE SETA BLANC CHAUSSETTE NOEL H8CM            | 2,10 CHF | 24 |  |  | CARTON | Noel | 93 |
| 53361 | BOURSE SETA OR CHAUSSETTE NOEL H8CM               | 2,10 CHF | 24 |  |  | CARTON | Noel | 93 |
| 53362 | BOURSE SETA OR CLOCHE H8CM                        | 2,10 CHF | 24 |  |  | CARTON | Noel | 93 |
| 53363 | BOURSE SETA ROUGE CLOCHE H8CM                     | 2,10 CHF | 24 |  |  | CARTON | Noel | 93 |
| 53364 | BOURSE SETA BLANC CLOCHE H8CM                     | 2,10 CHF | 24 |  |  | CARTON | Noel | 93 |
| 53365 | BOURSE SETA ROUGE PERE NOEL H8CM                  | 2,10 CHF | 24 |  |  | CARTON | Noel | 93 |
| 53366 | BOURSE SETA NOIR PERE NOEL H8CM                   | 2,10 CHF | 24 |  |  | CARTON | Noel | 93 |
| 53367 | BOURSE SETA OR PERE NOEL H8CM                     | 2,10 CHF | 24 |  |  | CARTON | Noel | 93 |
| 53368 | BOURSE SETA ROUGE NOEUD OR H8CM                   | 2,10 CHF | 24 |  |  | CARTON | Noel | 93 |
| 53369 | BOURSE SETA BLANC NOEUD OR H8CM                   | 2,10 CHF | 24 |  |  | CARTON | Noel | 93 |
| 53370 | BOURSE SETA OR NOEUD OR H8CM                      | 2,10 CHF | 24 |  |  | CARTON | Noel | 93 |
| 53371 | BOURSE SETA BLANC 2ASS SAPIN ROUGE/FLOCON OR H8CM | 2,10 CHF | 24 |  |  | CARTON | Noel | 93 |

# Catalogue spécial Noël 2026



24796 | D9H5/13X9H4/8,5X8,5H4-D19,5CM

33944 | D8,5H4/20X18CM

33966 | 17X15,5H2CM

24792 | 20X10,5H5CM

24793 | 21X20H3CM

24183 | 11,5X9,5H2,5CM

24184 | 10,5X10H2CM

24936 | D8,5H7/16CM

24795 | D9H3/13X9H4-20X12CM

|       |  |           |    |           |    |             |      |     |
|-------|--|-----------|----|-----------|----|-------------|------|-----|
| 24183 | CONTENANT SAPIN 11,5X9,5H2,5CM                               | 3,33 CHF  | 48 | 4,00 CHF  | 24 | PORCELAINE  | Noel | 102 |
| 24184 | CONTENANT ETOILE 10,5X10H2CM                                 | 3,33 CHF  | 48 | 4,00 CHF  | 24 | PORCELAINE  | Noel | 102 |
| 24792 | PLAT 2 BOLS BEIGE/TAUPE 20X10,5H5CM                          | 8,93 CHF  | 12 | 10,72 CHF | 4  | PORCELAINE  | Noel | 102 |
| 24793 | ASSIETTE COEUR BEIGE 21X20H3CM                               | 7,70 CHF  | 12 | 9,21 CHF  | 4  | PORCELAINE  | Noel | 102 |
| 24795 | 2 BOLS BEIGE/TAUPE S/PLAT RECT. D9H3/13X9H4-20X12CM          | 12,29 CHF | 8  | 14,76 CHF | 4  | PORCELAINE  | Noel | 102 |
| 24796 | 3 BOLS BEIGE/TAUPE S/PLAT ROND D9H5/13X9H4/8,5X8,5H4-D19,5CM | 14,53 CHF | 8  | 17,44 CHF | 4  | PORCELAINE  | Noel | 102 |
| 24936 | TASSE + SS TASSE BLANCHE D8,5H7/16CM                         | 6,41 CHF  | 48 | 7,70 CHF  | 6  | PORCELAINE  | Noel | 102 |
| 33944 | TRIO DE BOLS S/PLANCHE BAMBOU D8,5H4/20X18CM                 | 15,65 CHF | 8  | 18,73 CHF | 4  | BAMBOU/PORC | Noel | 102 |
| 33966 | ASSIETTE SAPIN 17X15,5H2CM                                   | 5,57 CHF  | 12 | 6,69 CHF  | 6  | PORCELAINE  | Noel | 102 |

# Catalogue spécial Noël 2026

## Autocollants



12783



12782

10 paquets 4,5x2,5CM



12784 | 10 paquets 6,5x3CM

## Stickers

150PCS 3,8CM



51772  
4,4CM



53323



52787



52731



53332



53327



53328



51761



52788



53107  
50PCS 7,6x26CM



53329 | 2 ASS



53324



53326



52296



52766



53335



53325

110

|       |   |           |    |          |    |           |      |     |
|-------|---|-----------|----|----------|----|-----------|------|-----|
| 12782 | 10 "JOYEUX NOEL" OR AUTOCOLLANTS 4,5X2,5CM            | 3,61 CHF  | 30 | 4,34 CHF | 10 | PVC       | Noel | 110 |
| 12783 | 10 "JOYEUX NOEL" ARGENT AUTOCOLLANTS 4,5X2,5CM        | 3,61 CHF  | 30 | 4,34 CHF | 10 | PVC       | Noel | 110 |
| 12784 | 10 "BONNES FETES" ROUGE AUTOCOLLANTS 6,5X3CM          | 3,61 CHF  | 30 | 4,34 CHF | 10 | PVC       | Noel | 110 |
| 51761 | STICKERS OR "Merci" NP. 150PCS PN D3,8CM              | 16,77 CHF | 1  |          |    | PLASTIQUE | Noel | 110 |
| 51762 | STICKERS OR "Merci" 4ass NP. 500PCS PN D3,8CM         | 39,17 CHF | 1  |          |    | PLASTIQUE | Noel | 110 |
| 51764 | STICKERS "MADE IN BELGIUM" NP. 150PCS PN D3,8CM       | 14,00 CHF | 1  |          |    | PLASTIQUE | Noel | 110 |
| 51765 | STICKERS "MADE IN FRANCE" NP. 150PCS PN D3,8CM        | 14,00 CHF | 1  |          |    | PLASTIQUE | Noel | 110 |
| 51772 | STICKERS PAIN D'EPICE NP. 150PCS PN 4,4CM             | 14,00 CHF | 1  |          |    | PLASTIQUE | Noel | 110 |
| 52296 | STICKERS NP LUTINS "Joyeux Noel" 150PCS PN D3,8CM     | 16,77 CHF | 1  |          |    | PLASTIQUE | Noel | 110 |
| 52731 | STICKERS BOULES NOEL ROUGES NP. 150PCS PN 3,8X3,8CM   | 16,77 CHF | 1  |          |    | PLASTIQUE | Noel | 110 |
| 52766 | STICKERS ALERTE LUTINS NP. 150PCS PN 3,8X3,8CM        | 16,77 CHF | 1  |          |    | PLASTIQUE | Noel | 110 |
| 52787 | STICKERS HO HO HO ROUGE NP. 150PCS PN D3,8CM          | 16,77 CHF | 1  |          |    | PLASTIQUE | Noel | 110 |
| 52788 | STICKERS CERF NOIR OR NP. 150PCS PN 3,8X3,8CM         | 16,77 CHF | 1  |          |    | PLASTIQUE | Noel | 110 |
| 53107 | STICKERS BOULES "Meilleurs Voeux" 50 PCS PN 7,6X7,6CM | 16,77 CHF | 1  |          |    | PLASTIQUE | Noel | 110 |
| 53323 | STICKERS "Ginger" NP. 150PCS PN D3,8CM                | 16,77 CHF | 1  |          |    | PLASTIQUE | Noel | 110 |
| 53324 | STICKERS GNOME ROUGE NP. 150PCS PN 3,8X3,8CM          | 16,77 CHF | 1  |          |    | PLASTIQUE | Noel | 110 |
| 53325 | STICKERS COEURS"Love" NP. 150PCS PN 3,8X3,8CM         | 16,77 CHF | 1  |          |    | PLASTIQUE | Noel | 110 |
| 53326 | STICKERS OURS"Joyeuses Fêtes"NP. 150PCS PN D3,8CM     | 16,77 CHF | 1  |          |    | PLASTIQUE | Noel | 110 |
| 53327 | STICKERS OURS NP. 150PCS PN D3,8CM                    | 16,77 CHF | 1  |          |    | PLASTIQUE | Noel | 110 |
| 53328 | STICKERS BOULES NP. 150PCS PN D3,8CM                  | 16,77 CHF | 1  |          |    | PLASTIQUE | Noel | 110 |
| 53329 | STICKERS CHAT 2ASS NP. 150PCS PN D3,8CM               | 16,77 CHF | 1  |          |    | PLASTIQUE | Noel | 110 |
| 53332 | STICKERS CASSE NOISETTE NP. 150PCS PN D3,8CM          | 16,77 CHF | 1  |          |    | PLASTIQUE | Noel | 110 |
| 53335 | STICKERS "I love you" NP. 150PCS PN 5,7X4,9CM         | 16,77 CHF | 1  |          |    | PLASTIQUE | Noel | 110 |

# Catalogue spécial Noël 2026

## Stickers

500PCS 1,6CM



## Stickers

150PCS 3,8CM



|       |  |           |   |  |  |           |      |     |
|-------|--|-----------|---|--|--|-----------|------|-----|
| 52147 | STICKERS "Joyeuses Fêtes" BLEU OR NP. 500PCS PN D3,8CM               | 39,17 CHF | 1 |  |  | PLASTIQUE | Noel | 111 |
| 52150 | STICKERS PÈRE NOEL OR NP. 500PCS PN D3,8CM                           | 39,17 CHF | 1 |  |  | PLASTIQUE | Noel | 111 |
| 52151 | STICKERS "Plaisir Gourmand" S NP. 150PCS PN D3,8CM                   | 16,77 CHF | 1 |  |  | PLASTIQUE | Noel | 111 |
| 52747 | STICKERS GNOME BEIGE OR NP. 500PCS PN D3,8CM                         | 39,17 CHF | 1 |  |  | PLASTIQUE | Noel | 111 |
| 52778 | STICKERS GINGER ROSE 2ASS NP. 500PCS PN D3,8CM                       | 39,17 CHF | 1 |  |  | PLASTIQUE | Noel | 111 |
| 52779 | STICKERS CADEAUX BRONZE NP. 500PCS PN D3,8CM                         | 39,17 CHF | 1 |  |  | PLASTIQUE | Noel | 111 |
| 52780 | STICKERS "Joyeuses Fêtes" BOULES OR NP. 500PCS PN 3,8X3,8CM          | 39,17 CHF | 1 |  |  | PLASTIQUE | Noel | 111 |
| 52781 | STICKERS "Meilleurs Voeux" OR NP. 500PCS PN D3,8CM                   | 39,17 CHF | 1 |  |  | PLASTIQUE | Noel | 111 |
| 52782 | STICKERS "Joyeuses Noël" GNOMES ROUGE NP. 500PCS PN 3,8X3,8CM        | 39,17 CHF | 1 |  |  | PLASTIQUE | Noel | 111 |
| 52783 | STICKERS "Joyeuses Fêtes" OR/NOIR 3ASS NP. 500PCS PN D3,8CM          | 39,17 CHF | 1 |  |  | PLASTIQUE | Noel | 111 |
| 52784 | STICKERS FLOCONS "Joyeuses Fêtes" OR 3ASS NP. 500PCS PN D3,8CM       | 39,17 CHF | 1 |  |  | PLASTIQUE | Noel | 111 |
| 52786 | STICKERS ETOILES "Plaisir d'offrir" 3ASS NP. 500PCS PN D3,8CM        | 39,17 CHF | 1 |  |  | PLASTIQUE | Noel | 111 |
| 52789 | STICKERS CRYSTAL BLEU "Meilleurs Voeux" OR NP. 500PCS PN D3,8CM      | 39,17 CHF | 1 |  |  | PLASTIQUE | Noel | 111 |
| 52793 | STICKERS VERT "Joyeuses Fêtes" OR NP. 500PCS PN 3,8X3,8CM            | 39,17 CHF | 1 |  |  | PLASTIQUE | Noel | 111 |
| 52794 | STICKERS ROUGE "Meilleurs Voeux" BOULES NP. 500PCS PN 3,8X3,8CM      | 39,17 CHF | 1 |  |  | PLASTIQUE | Noel | 111 |
| 53043 | STICKERS "Joyeux Anniversaire" 2ASS NP. 150PCS PN D3,8CM             | 16,77 CHF | 1 |  |  | PLASTIQUE | Noel | 111 |
| 53334 | STICKERS BONNE RETRAITE NP. 150PCS PN D3,8CM                         | 16,77 CHF | 1 |  |  | PLASTIQUE | Noel | 111 |
| 56117 | STICKERS REC. KRAFT NP. 500PCS "Tout simplement fait Maison" 5X2,5CM | 39,17 CHF | 1 |  |  | PLASTIQUE | Noel | 111 |
| 56120 | STICKERS ROND NP. 500PCS "Fat Maison" D3,8CM                         | 39,17 CHF | 1 |  |  | PLASTIQUE | Noel | 111 |
| 56125 | STICKERS ROND OR METALLIQUE NP. 500PCS "Plaisir d'offrir" D3CM       | 39,17 CHF | 1 |  |  | PLASTIQUE | Noel | 111 |
| 56132 | STICKERS COEURS "De tout coeur MERCI" NP. 500PCS PN D3,8CM           | 39,17 CHF | 1 |  |  | PLASTIQUE | Noel | 111 |

# Catalogue spécial Noël 2026



|       |  |          |     |          |     |      |      |     |
|-------|--|----------|-----|----------|-----|------|------|-----|
| 13331 | CLIP NOEUD/FLOCON NOIR 2ASS 4H4,5CM      | 0,90 CHF | 288 | 1,06 CHF | 144 | BOIS | Noel | 114 |
| 13335 | CLIP SAPIN NOIR 2,5H5CM                  | 0,90 CHF | 288 | 1,06 CHF | 144 | BOIS | Noel | 114 |
| 13344 | CLIP FACTEUR NOEL ROUGE 4,5H5CM          | 0,92 CHF | 288 | 1,12 CHF | 144 | BOIS | Noel | 114 |
| 13447 | CLIP LOLLIPOP 4ASS D3H7CM                | 0,48 CHF | 384 | 0,67 CHF | 192 | BOIS | Noel | 114 |
| 13487 | CLIP RENNE DE NOEL 3H5CM                 | 0,76 CHF | 288 | 0,90 CHF | 144 | BOIS | Noel | 114 |
| 13492 | CLIP SAPIN VERT/ETOILE OR 2ASS 2,5H3,5CM | 0,76 CHF | 288 | 0,90 CHF | 144 | BOIS | Noel | 114 |
| 13506 | CLIP CHAMIGNON 2ASS 2H4,5CM              | 0,62 CHF | 288 | 0,73 CHF | 144 | BOIS | Noel | 114 |
| 13509 | CLIP CADEAU ROUGE/NATUREL 2ASS 3H4,5CM   | 0,67 CHF | 288 | 0,81 CHF | 144 | BOIS | Noel | 114 |
| 13523 | CLIP RENNE 4H5CM                         | 0,64 CHF | 288 | 0,81 CHF | 144 | BOIS | Noel | 114 |
| 13550 | CLIP HOUX 3ASS D4H4,5CM                  | 0,62 CHF | 288 | 0,73 CHF | 144 | BOIS | Noel | 114 |
| 13551 | CLIP PAIN D'EPICES 6ASS 3H4,5CM          | 0,64 CHF | 288 | 0,78 CHF | 144 | BOIS | Noel | 114 |
| 13552 | CLIP CADEAUX NOEL 3ASS 4H4,5CM           | 0,70 CHF | 288 | 0,84 CHF | 144 | BOIS | Noel | 114 |
| 13560 | CLIP RENNE LUNETTES 3H4CM                | 0,76 CHF | 288 | 0,90 CHF | 144 | BOIS | Noel | 114 |
| 13562 | CLIP SAPIN 2ASS 4,5H6CM                  | 0,87 CHF | 144 | 1,04 CHF | 96  | BOIS | Noel | 114 |
| 13563 | CLIP HOUX 2ASS 5,5H5CM                   | 0,87 CHF | 144 | 1,04 CHF | 96  | BOIS | Noel | 114 |
| 13564 | CLIP CASSE NOISETTE 3ASS 2H6CM           | 0,76 CHF | 288 | 0,92 CHF | 96  | BOIS | Noel | 114 |
| 13567 | CLIP GNOME 3ASS 3H5CM                    | 0,70 CHF | 288 | 0,84 CHF | 144 | BOIS | Noel | 114 |
| 13569 | CLIP SAPIN EN LAINE 3ASS 3,5H5CM         | 0,76 CHF | 288 | 0,90 CHF | 144 | BOIS | Noel | 114 |
| 13580 | SKI ROUGE A SUSPENDRE H7CM               | 0,98 CHF | 96  | 1,18 CHF | 48  | BOIS | Noel | 114 |
| 13590 | CLIP SCOLAIRE 3ASS 5H4,5CM               | 0,67 CHF | 144 | 0,81 CHF | 96  | BOIS | Noel | 114 |

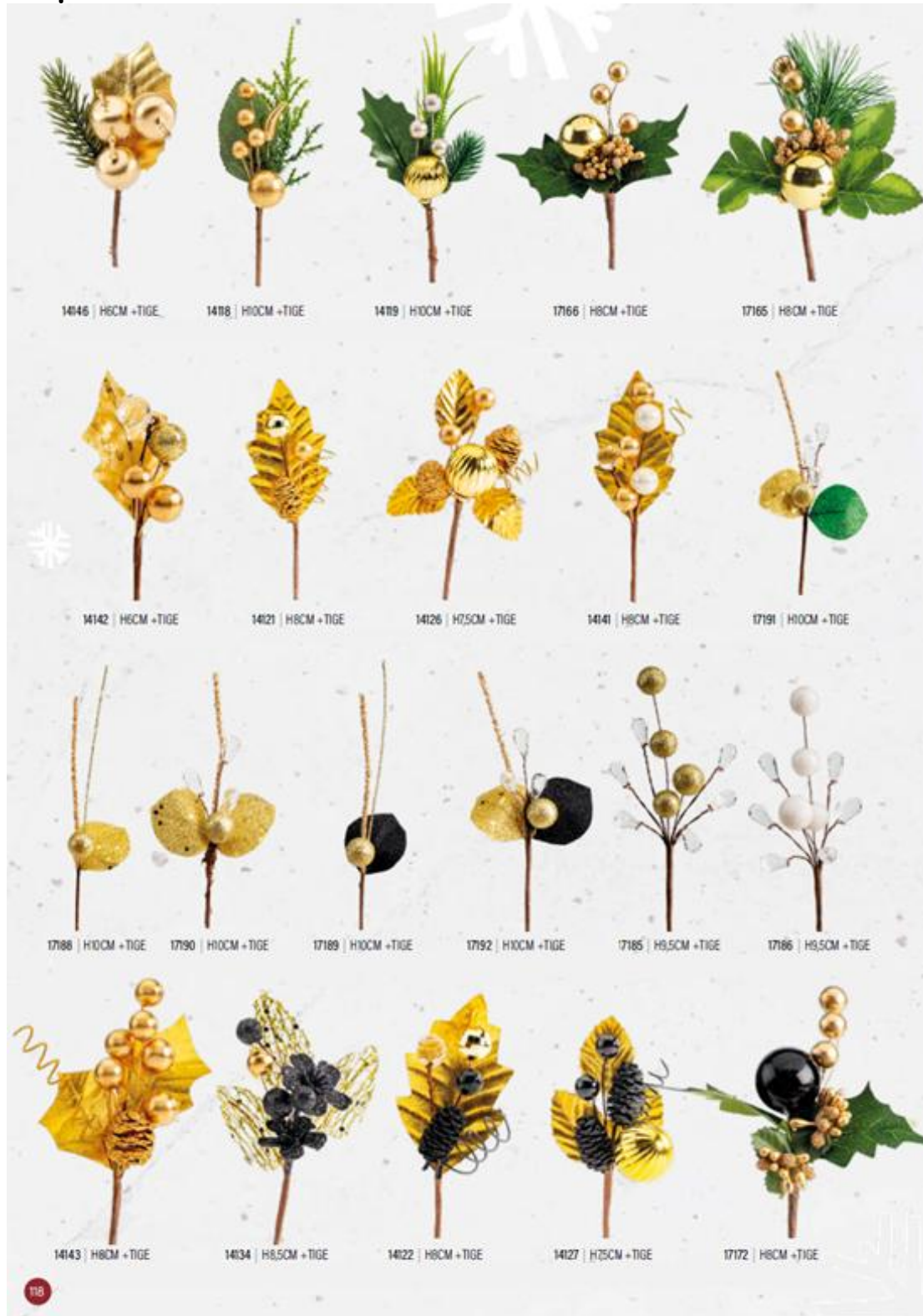


# Catalogue spécial Noël 2026



|       |   |          |     |          |    |               |      |     |
|-------|---|----------|-----|----------|----|---------------|------|-----|
| 14029 | PIQUET POMME DE PIN SAPIN H8CM +TIGE                | 0,81 CHF | 100 | 0,98 CHF | 50 | FLEUR ARTIFIC | Noel | 117 |
| 14030 | PIQUET POMME ROUGE SAPIN H8CM +TIGE                 | 0,90 CHF | 100 | 1,06 CHF | 50 | FLEUR ARTIFIC | Noel | 117 |
| 14106 | PIQUET GUI H7CM +TIGE                               | 0,70 CHF | 100 | 0,84 CHF | 50 | FLEUR ARTIFIC | Noel | 117 |
| 14108 | PIQUET GRENADE POMME DE PIN H7CM +TIGE              | 1,37 CHF | 100 | 1,65 CHF | 50 | FLEUR ARTIFIC | Noel | 117 |
| 14112 | PIQUET GRENADE SAPINS H6,5CM +TIGE                  | 1,37 CHF | 100 | 1,65 CHF | 50 | FLEUR ARTIFIC | Noel | 117 |
| 14113 | PIQUET POMME FEUILLE HOUX H9CM +TIGE                | 1,40 CHF | 100 | 1,68 CHF | 50 | FLEUR ARTIFIC | Noel | 117 |
| 14123 | PIQUET POMME DE PIN BOULE ROUGE H8CM +TIGE          | 1,12 CHF | 100 | 1,34 CHF | 50 | FLEUR ARTIFIC | Noel | 117 |
| 14529 | PIQUET BAIES ROUGES H5CM +TIGE                      | 0,53 CHF | 100 | 0,64 CHF | 50 | FLEUR ARTIFIC | Noel | 117 |
| 14626 | CHAMPIGNONS SUR PIQUE H5CM +PIC PRIX NET            | 0,28 CHF | 120 |          |    | FLEUR ARTIFIC | Noel | 117 |
| 14894 | PIQUET CAMION ROUGE PN 10H13CM +TIGE                | 0,28 CHF | 50  |          |    | FLEUR ARTIFIC | Noel | 117 |
| 17160 | PIQUET SAPIN GLAND/POMME DE PIN BOULE OR H9CM +TIGE | 1,26 CHF | 100 | 1,51 CHF | 50 | FLEUR ARTIFIC | Noel | 117 |
| 17161 | PIQUET SAPIN POMME DE PIN BAIES ROUGES H10CM +TIGE  | 1,26 CHF | 100 | 1,51 CHF | 50 | FLEUR ARTIFIC | Noel | 117 |
| 17162 | PIQUET SAPIN CHAMPIGNON H10CM +TIGE                 | 1,26 CHF | 100 | 1,51 CHF | 50 | FLEUR ARTIFIC | Noel | 117 |
| 17163 | PIQUET POMME DE PIN BAIES ROUGES +NOEUD H12CM +TIGE | 1,26 CHF | 100 | 1,51 CHF | 50 | FLEUR ARTIFIC | Noel | 117 |
| 17164 | PIQUET BOULE FRUITS ROUGES SAPIN D2,5H8CM +TIGE     | 1,57 CHF | 100 | 1,90 CHF | 50 | FLEUR ARTIFIC | Noel | 117 |
| 17168 | PIQUET BOULE/BAIES ROUGES D2,5H8CM +TIGE            | 1,57 CHF | 100 | 1,90 CHF | 50 | FLEUR ARTIFIC | Noel | 117 |
| 17181 | PIQUET GRENADES ROUGES H8CM +TIGE                   | 1,26 CHF | 100 | 1,51 CHF | 50 | FLEUR ARTIFIC | Noel | 117 |
| 17182 | PIQUET BOULE ROUGE/POMME DE PIN D3H8CM +TIGE        | 1,18 CHF | 100 | 1,40 CHF | 50 | FLEUR ARTIFIC | Noel | 117 |
| 17183 | PIQUET CHAMPIGNON/POMME DE PIN H12CM +TIGE          | 1,57 CHF | 100 | 1,90 CHF | 50 | FLEUR ARTIFIC | Noel | 117 |
| 17184 | PIQUET POMME DE PIN SAPIN H9CM +TIGE                | 1,65 CHF | 100 | 1,99 CHF | 50 | FLEUR ARTIFIC | Noel | 117 |

# Catalogue spécial Noël 2026



|       |  |          |     |          |    |               |      |     |
|-------|--|----------|-----|----------|----|---------------|------|-----|
| 14118 | PIQUET BOULE OR H10CM +TIGE                          | 1,26 CHF | 100 | 1,51 CHF | 50 | FLEUR ARTIFIC | Noel | 118 |
| 14119 | PIQUET BOULE LIGNE OR H10CM +TIGE                    | 1,48 CHF | 100 | 1,79 CHF | 50 | FLEUR ARTIFIC | Noel | 118 |
| 14121 | PIQUET POMME DE PIN BOULE OR H8CM +TIGE              | 1,09 CHF | 100 | 1,32 CHF | 50 | FLEUR ARTIFIC | Noel | 118 |
| 14122 | PIQUET POMME DE PIN BOULE NOIR H8CM +TIGE            | 1,12 CHF | 100 | 1,34 CHF | 50 | FLEUR ARTIFIC | Noel | 118 |
| 14126 | PIQUET POMME DE PIN BOULE LIGNE OR H7,5CM +TIGE      | 1,37 CHF | 100 | 1,65 CHF | 50 | FLEUR ARTIFIC | Noel | 118 |
| 14127 | PIQUET POMME DE PIN NOIR BOULE LIGNE OR H7,5CM +TIGE | 1,37 CHF | 100 | 1,65 CHF | 50 | FLEUR ARTIFIC | Noel | 118 |
| 14134 | PIQUET FLEURS NOIRES FEUILLES OR H8,5CM +TIGE        | 1,37 CHF | 100 | 1,65 CHF | 50 | FLEUR ARTIFIC | Noel | 118 |
| 14141 | PIQUET PERLE BOULES OR H8CM +TIGE                    | 1,26 CHF | 100 | 1,51 CHF | 50 | FLEUR ARTIFIC | Noel | 118 |
| 14142 | PETIT PIQUET BOULES OR LIGNE H6CM +TIGE              | 0,81 CHF | 100 | 0,98 CHF | 50 | FLEUR ARTIFIC | Noel | 118 |
| 14143 | PIQUET POMME DE PIN BOULES OR H8CM +TIGE             | 1,37 CHF | 100 | 1,65 CHF | 50 | FLEUR ARTIFIC | Noel | 118 |
| 14146 | PIQUET POMMES OR H6CM +TIGE                          | 1,37 CHF | 100 | 1,65 CHF | 50 | FLEUR ARTIFIC | Noel | 118 |
| 17165 | PIQUET BOULE FRUITS OR SAPIN D2,5H8CM +TIGE          | 1,57 CHF | 100 | 1,90 CHF | 50 | FLEUR ARTIFIC | Noel | 118 |
| 17166 | PIQUET BOULE/BAIES OR D2,5H8CM +TIGE                 | 1,57 CHF | 100 | 1,90 CHF | 50 | FLEUR ARTIFIC | Noel | 118 |
| 17172 | PIQUET BOULE NOIRE BAIES OR D2,5H8CM +TIGE           | 1,57 CHF | 100 | 1,90 CHF | 50 | FLEUR ARTIFIC | Noel | 118 |
| 17185 | PIQUET BOULES OR BIJOUX H9,5CM +TIGE                 | 1,40 CHF | 100 | 1,68 CHF | 50 | FLEUR ARTIFIC | Noel | 118 |
| 17186 | PIQUET BOULES BLANCHES BIJOUX H9,5CM +TIGE           | 1,40 CHF | 100 | 1,68 CHF | 50 | FLEUR ARTIFIC | Noel | 118 |
| 17188 | PIQUET BOULE/FEUILLE OR H10CM +TIGE                  | 0,81 CHF | 100 | 0,98 CHF | 50 | FLEUR ARTIFIC | Noel | 118 |
| 17189 | PIQUET BOULE OR FEUILLE NOIRE H10CM +TIGE            | 0,81 CHF | 100 | 0,98 CHF | 50 | FLEUR ARTIFIC | Noel | 118 |
| 17190 | PIQUET BOULE DOUBLE FEUILLE OR H10CM +TIGE           | 1,23 CHF | 100 | 1,48 CHF | 50 | FLEUR ARTIFIC | Noel | 118 |
| 17191 | PIQUET BOULE OR FEUILLE OR/VERT H10CM +TIGE          | 1,23 CHF | 100 | 1,48 CHF | 50 | FLEUR ARTIFIC | Noel | 118 |
| 17192 | PIQUET BOULE OR FEUILLE OR/NOIRE H10CM +TIGE         | 1,23 CHF | 100 | 1,48 CHF | 50 | FLEUR ARTIFIC | Noel | 118 |